

Emmet County, Iowa
Iowa North Zone (1401)
Horiz. Datum: NAD83(1996)
Vert. Datum: NAVD 1988
US Survey Feet
2006

Point Name: **137**

Designation: 06-137 (DD43) Emmet Co GPS Control Point

Northing: **3937942.69sft** Easting: **4654461.76sft**

Orthometric Height: **1265.27sft** Ellipsoid Height: **1171.92sft** **Geoid03**

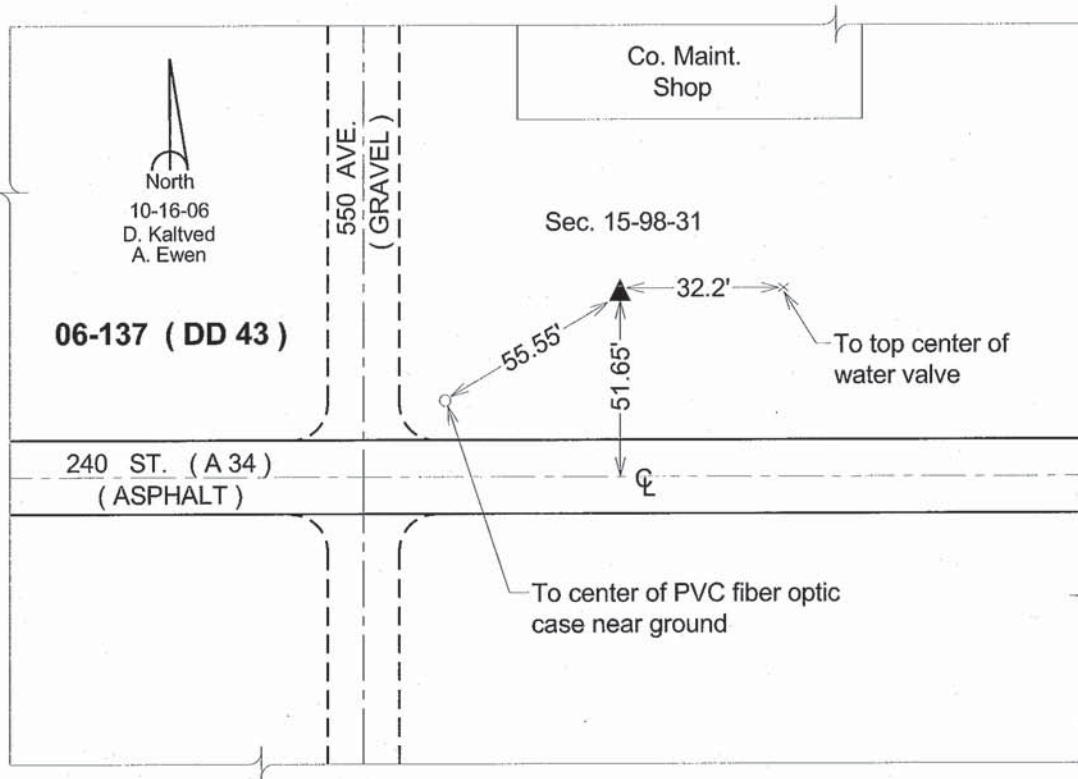
Latitude: **43°17'55.46442"N**

Longitude: **94°30'07.71144"W**

Mapping Angle: **-0°40'45"**

Combination Scale Factor: **0.99995010**

Monument Type: Berntsen Top Security Rod Monument with a 3-1/4" dia. domed survey cap and permanent magnet encased in a 5" dia. PVC pipe with a NGS style aluminum access cover.



This document was prepared by DCI and GBC for use by Emmet County, Iowa.