

Emmet County, Iowa
Iowa North Zone (1401)
Horiz. Datum: NAD83(1996)
Vert. Datum: NAVD 1988
US Survey Feet
2006

Point Name: **138**

Designation: (N18) NGS 3rd order horiz. control station. PID: OP1158 Desig: ESTHPORT

Northing: **3977271.28sft** Easting: **4590145.00sft**

Orthometric Height: **1314.57sft** Ellipsoid Height: **1221.66sft** **Geoid03**

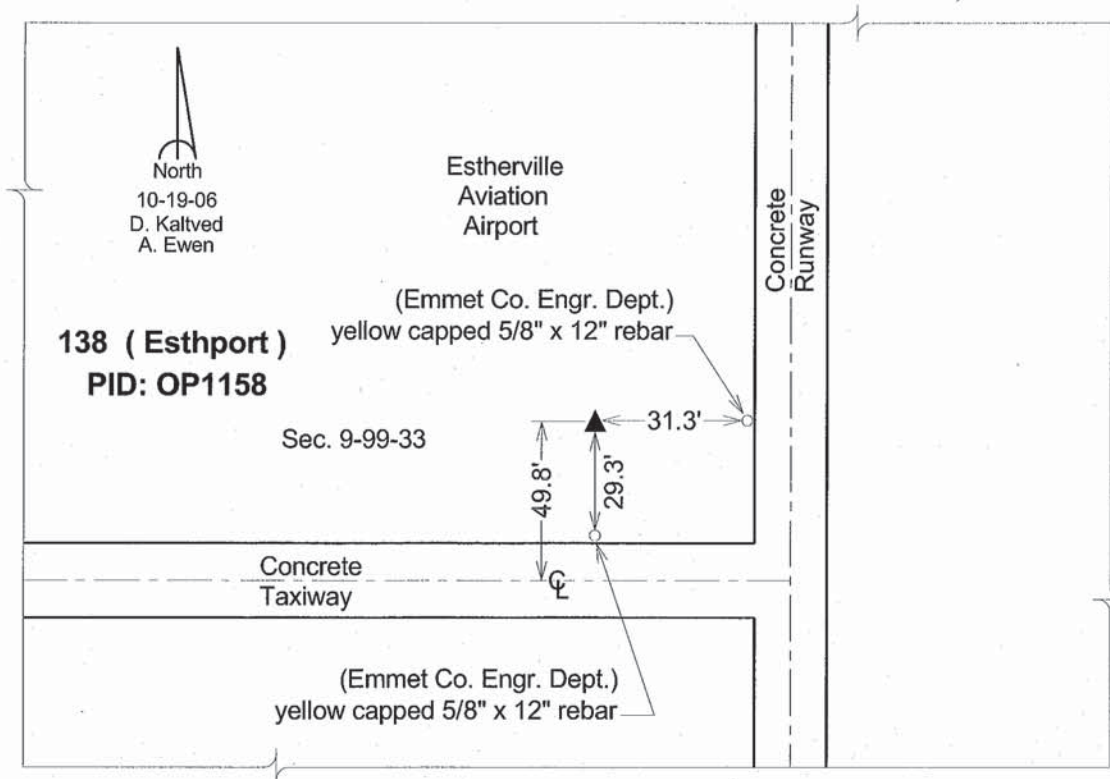
Latitude: **43°24'15.40986"N**

Longitude: **94°44'45.17479"W**

Mapping Angle: **-0°50'40"**

Combination Scale Factor: **0.99996976**

Monument Type: The station is a punch mark in top of a stainless steel rod driven into the ground and encased in a 5-inch PVC pipe with a logo cap surrounded by concrete.



This document was prepared by DCI and GBC for use by Emmet County, Iowa.