

**Emmet County, Iowa**  
Iowa North Zone (1401)  
Horiz. Datum: NAD83(1996)  
Vert. Datum: NAVD 1988  
US Survey Feet  
**2006**

Point Name: **413**

**Designation:** (JJ20) PA-0413 Palo Alto Co GPS Control Point (Set by Palo Alto Co. in 2004)

Northing: **3922864.76sft** Easting: **4594525.14sft**

Orthometric Height: **1302.59sft** Ellipsoid Height: **1208.84sft** **Geoid03**

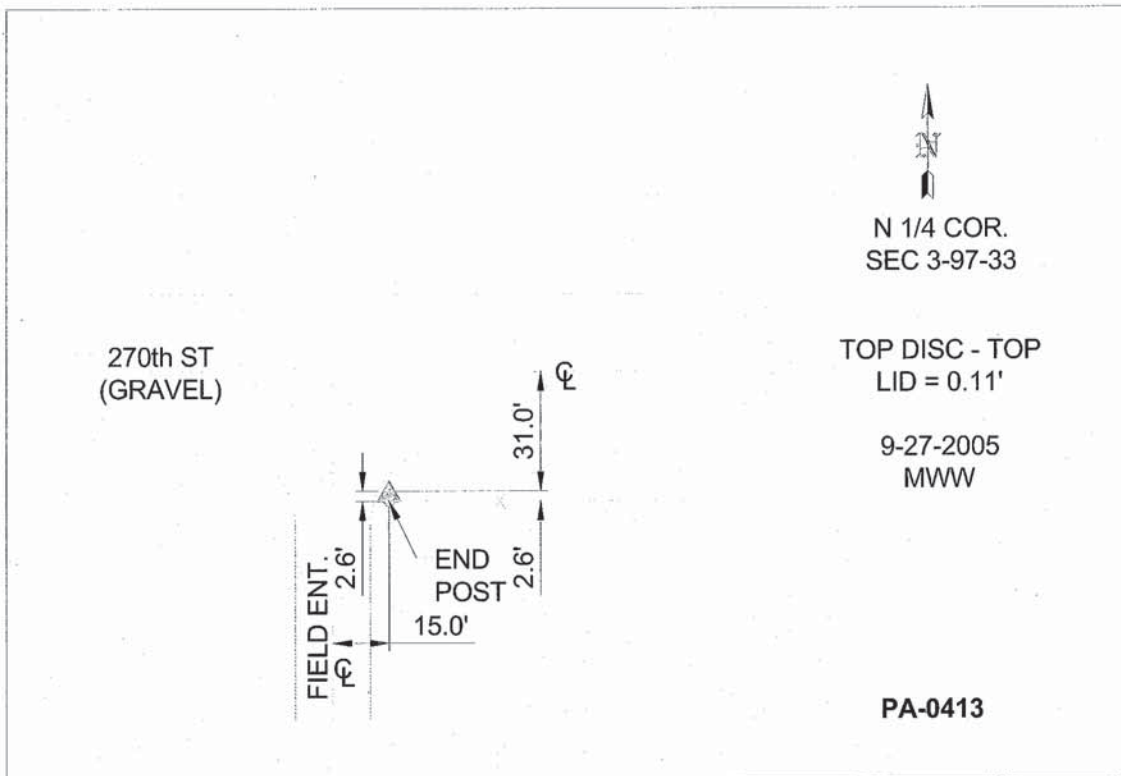
Latitude: **43°15'18.75499"N**

Longitude: **94°43'35.15841"W**

Mapping Angle: **-0°49'52"**

Combination Scale Factor: **0.99994025**

**Monument Type:** Berntsen Top Security Rod Monument with a 3-1/4" dia. domed survey cap and permanent magnet encased in a 5" dia. PVC pipe with a NGS style aluminum access cover.



*This document was prepared by DCI and GBC for use by Emmet County, Iowa.*