

Emmet County, Iowa
Iowa North Zone (1401)
Horiz. Datum: NAD83(1996)
Vert. Datum: NAVD 1988
US Survey Feet
2006

Point Name: **414**

Designation: (JJ25) PA-0414 Palo Alto Co GPS Control Point (Set by Palo Alto Co. in 2004)

Northing: **3922701.18sft** Easting: **4607290.98sft**

Orthometric Height: **1299.53sft** Ellipsoid Height: **1205.86sft** **Geoid03**

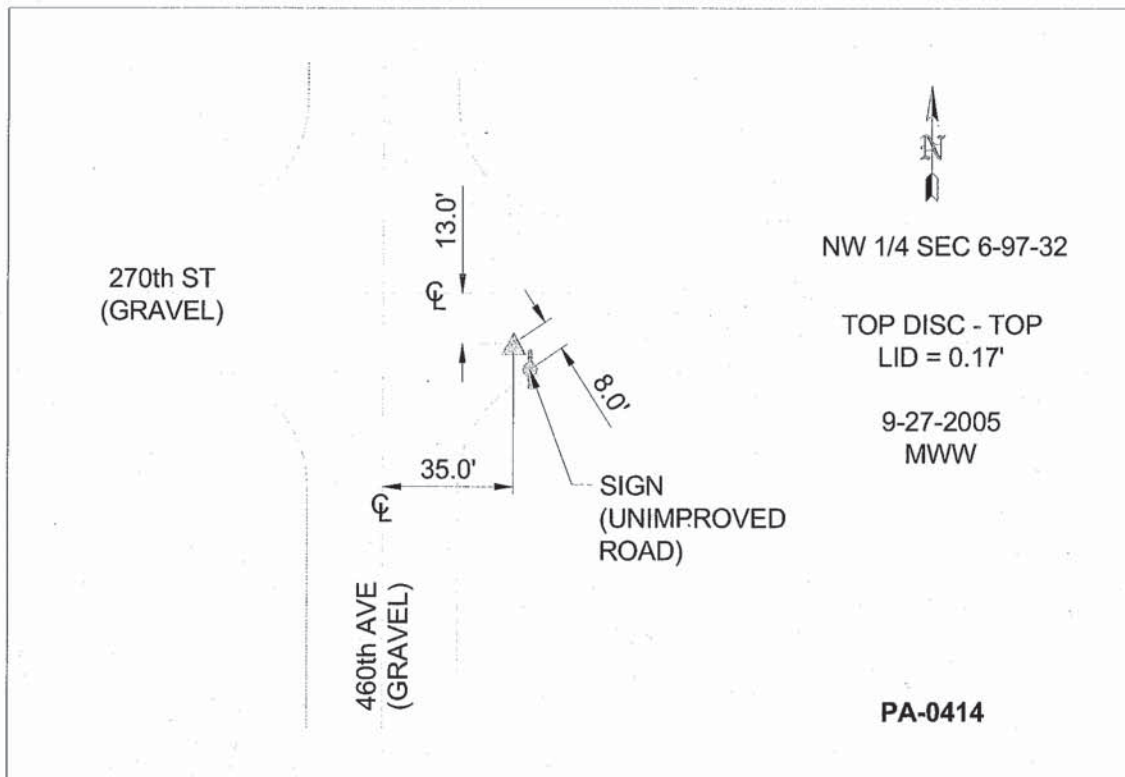
Latitude: **43°15'18.93287"N**

Longitude: **94°40'42.64071"W**

Mapping Angle: **-0°47'55"**

Combination Scale Factor: **0.99994040**

Monument Type: Berntsen Top Security Rod Monument with a 3-1/4" dia. domed survey cap and permanent magnet encased in a 5" dia. PVC pipe with a NGS style aluminum access cover.



This document was prepared by DCI and GBC for use by Emmet County, Iowa.