

**Emmet County, Iowa**  
Iowa North Zone (1401)  
Horiz. Datum: NAD83(1996)  
Vert. Datum: NAVD 1988  
US Survey Feet  
**2006**

Point Name: **415**

**Designation:** (KK31) PA-0415 Palo Alto Co GPS Control Point (Set by Palo Alto Co. in 2004)

Northing: **3920044.88sft** Easting: **4622984.40sft**

Orthometric Height: **1296.18sft** Ellipsoid Height: **1202.60sft** **Geoid03**

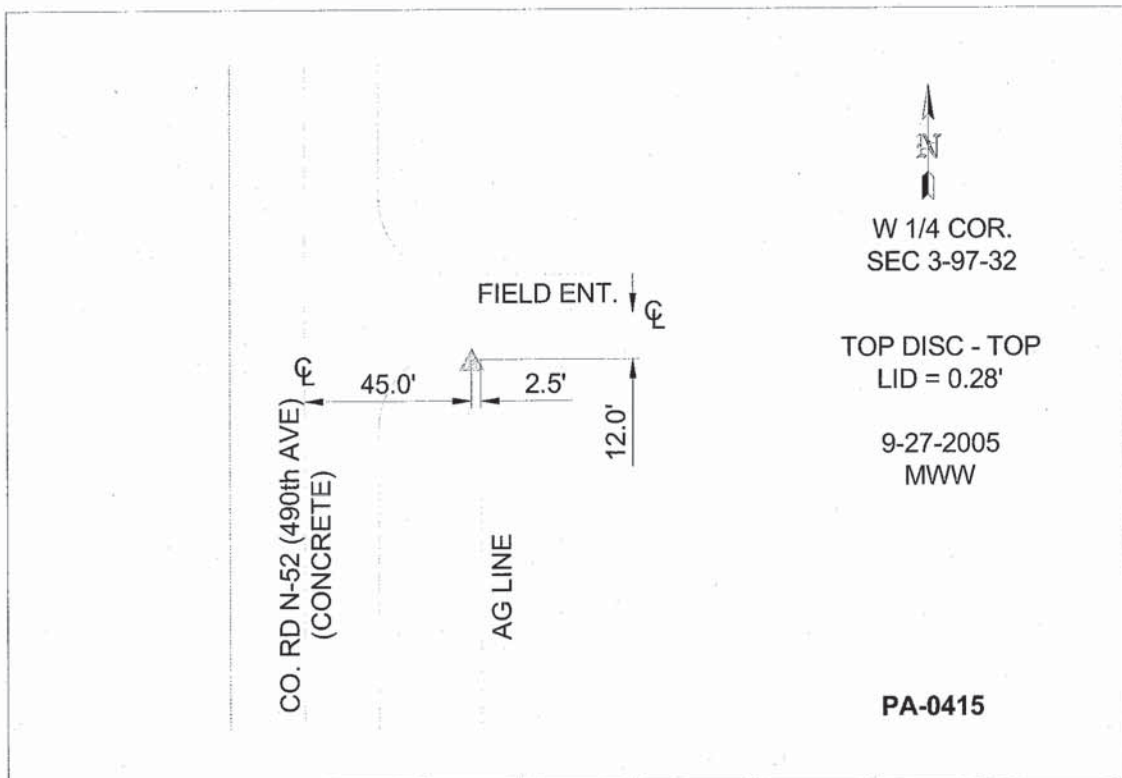
Latitude: **43°14'54.80624"N**

Longitude: **94°37'10.12004"W**

Mapping Angle: **-0°45'31"**

Combination Scale Factor: **0.99993936**

**Monument Type:** Berntsen Top Security Rod Monument with a 3-1/4" dia. domed survey cap and permanent magnet encased in a 5" dia. PVC pipe with a NGS style aluminum access cover.



*This document was prepared by DCI and GBC for use by Emmet County, Iowa.*