

Emmet County, Iowa
Iowa North Zone (1401)
Horiz. Datum: NAD83(1996)
Vert. Datum: NAVD 1988
US Survey Feet
2006

Point Name: **417**

Designation: (JJ43) PA-0417 Palo Alto Co GPS Control Point (Set by Palo Alto Co. in 2004)

Northing: **3922011.46sft** Easting: **4654270.55sft**

Orthometric Height: **1278.65sft** Ellipsoid Height: **1185.18sft** **Geoid03**

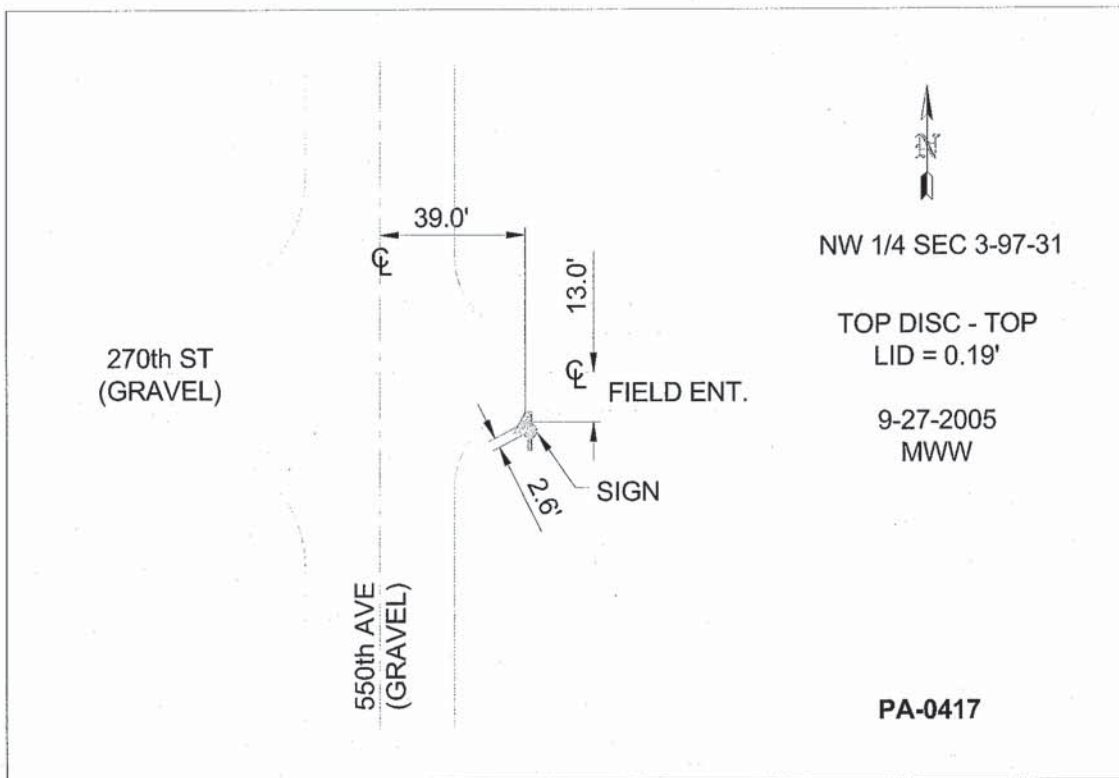
Latitude: **43°15'18.10554"N**

Longitude: **94°30'07.74317"W**

Mapping Angle: **-0°40'45"**

Combination Scale Factor: **0.99994135**

Monument Type: Berntsen Top Security Rod Monument with a 3-1/4" dia. domed survey cap and permanent magnet encased in a 5" dia. PVC pipe with a NGS style aluminum access cover.



This document was prepared by DCI and GBC for use by Emmet County, Iowa.