

Emmet County, Iowa
Iowa North Zone (1401)
Horiz. Datum: NAD83(1996)
Vert. Datum: NAVD 1988
US Survey Feet
2006

Point Name: **501**

Designation: (A48) 2005-501 Kossuth Co GPS Control Point (Set by DCI in 2005)

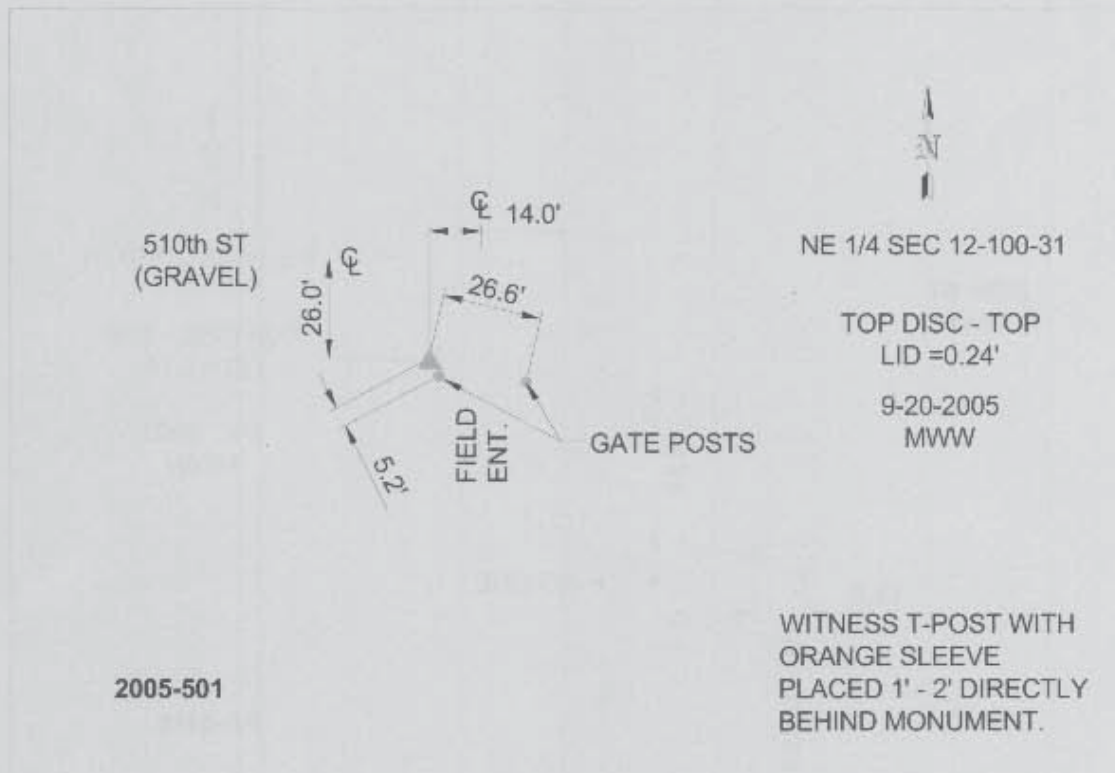
Northing: **4011232.05sft** Easting: **4671080.18sft**

Orthometric Height: **1222.03sft** Ellipsoid Height: **1129.49sft** **Geoid03**

Latitude: **43°30'01.12559"N** Longitude: **94°26'34.05602"W**

Mapping Angle: **-0°38'20"** Combination Scale Factor: **0.99999718**

Monument Type: Berntsen Top Security Rod Monument with a 2-1/2" dia. domed survey cap and permanent magnet encased in a 6" dia. PVC pipe with a NGS style aluminum access cover.



This document was prepared by DCI and GBC for use by Emmet County, Iowa.