

Emmet County, Iowa
Iowa North Zone (1401)
Horiz. Datum: NAD83(1996)
Vert. Datum: NAVD 1988
US Survey Feet
2006

Point Name: **517**

Designation: (K49) 2005-517 Kossuth Co GPS Control Point (Set by DCI in 2005)

Northing: **3985466.78**sft Easting: **4670932.15**sft

Orthometric Height: **1209.39**sft Ellipsoid Height: **1116.49**sft **Geoid03**

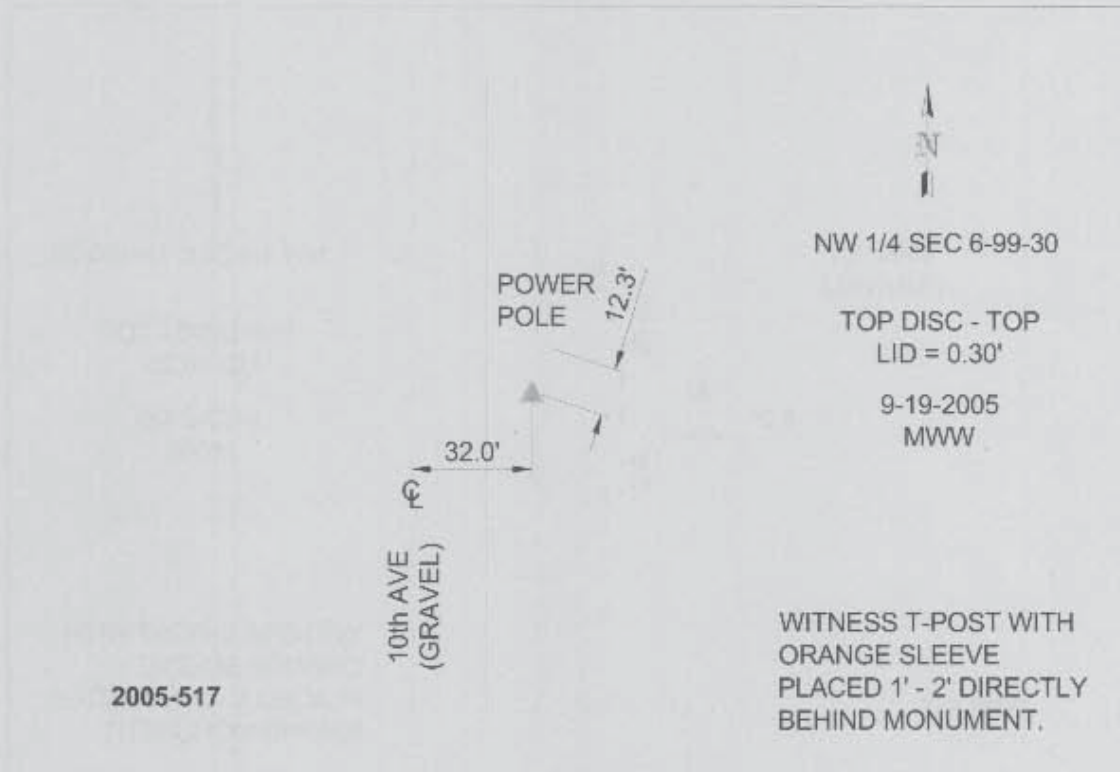
Latitude: **43°25'46.66861"N**

Longitude: **94°26'32.16818"W**

Mapping Angle: **-0°38'19"**

Combination Scale Factor: **0.99998058**

Monument Type: Berntsen Top Security Rod Monument with a 2-1/2" dia. domed survey cap and permanent magnet encased in a 6" dia. PVC pipe with a NGS style aluminum access cover.



This document was prepared by DCI and GBC for use by Emmet County, Iowa.