

Emmet County, Iowa
Iowa North Zone (1401)
Horiz. Datum: NAD83(1996)
Vert. Datum: NAVD 1988
US Survey Feet
2006

Point Name: **548**

Designation: (DD49) 2005-548 Kossuth Co GPS Control Point (Set by DCI in 2005)

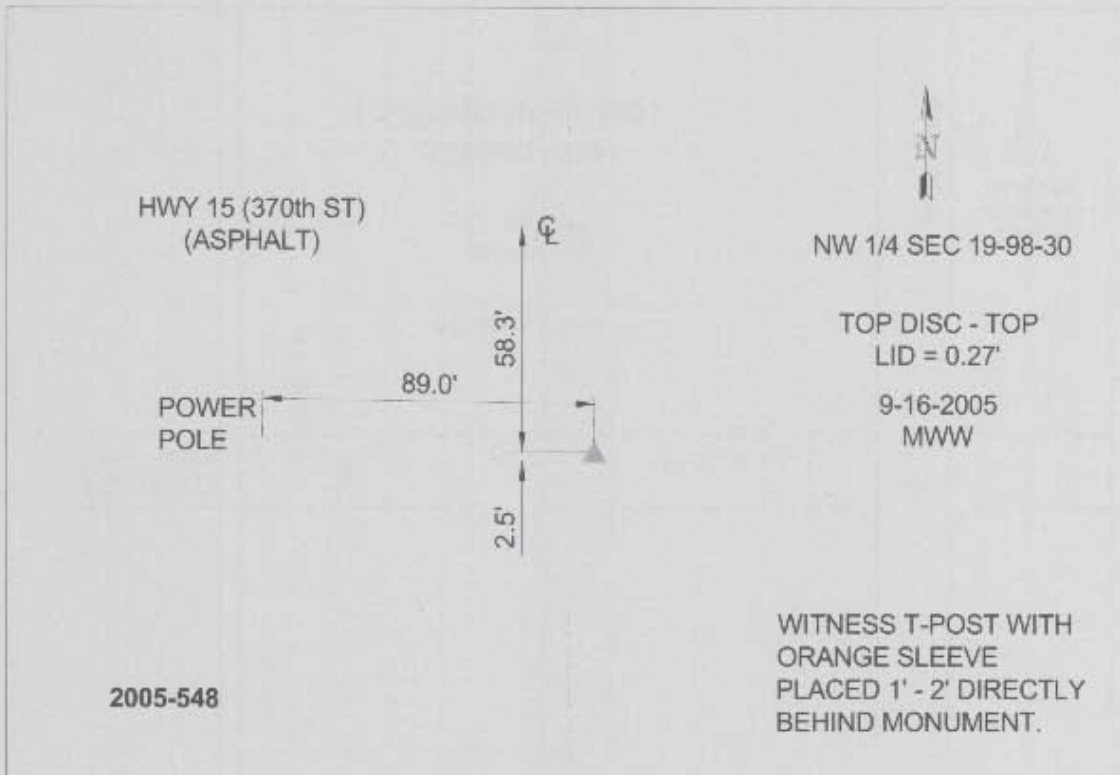
Northing: **3937538.84**sft Easting: **4670995.97**sft

Orthometric Height: **1240.10**sft Ellipsoid Height: **1146.70**sft **Geoid03**

Latitude: **43°17'53.35182"N** Longitude: **94°26'24.08172"W**

Mapping Angle: **-0°38'14"** Combination Scale Factor: **0.99995120**

Monument Type: Berntsen Top Security Rod Monument with a 2-1/2" dia. domed survey cap and permanent magnet encased in a 6" dia. PVC pipe with a NGS style aluminum access cover.



This document was prepared by DCI and GBC for use by Emmet County, Iowa.