

Emmet County, Iowa  
Iowa North Zone (1401)  
Horiz. Datum: NAD83(1996)  
Vert. Datum: NAVD 1988  
US Survey Feet  
2006

Point Name: 7073

Designation: (JJ1) 7073 Clay Co GPS Control Point (Set by Deni Assoc. Inc. in 1997)

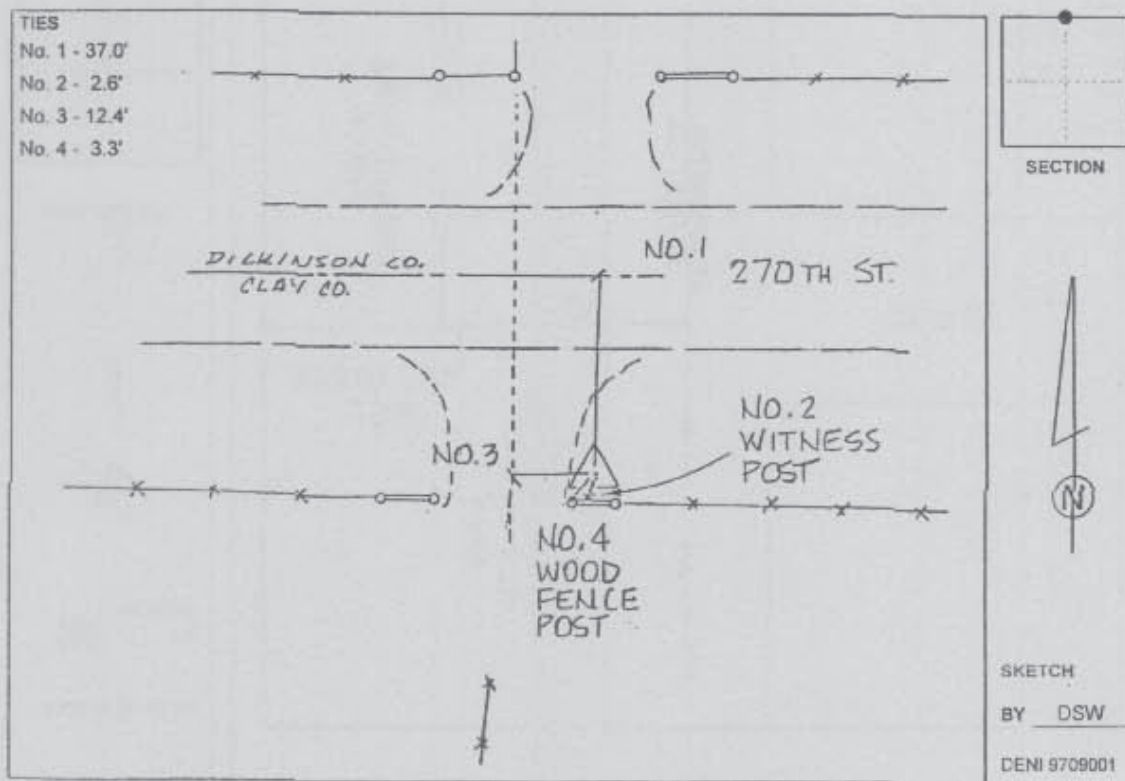
Northing: 3923604.03sft Easting: 4541989.73sft

Orthometric Height: 1418.75sft Ellipsoid Height: 1325.11sft Geoid03

Latitude: 43°15'17.92323"N Longitude: 94°55'25.13287"W

Mapping Angle: -0°57'54" Combination Scale Factor: 0.99993466

Monument Type: 3-1/4" Aluminum disk set in poured-in-place concrete monument with a 10" PVC collar.



This document was prepared by DCI and GBC for use by Emmet County, Iowa.