

**Emmet County, Iowa**  
 Iowa North Zone (1401)  
 Horiz. Datum: NAD83(1996)  
 Vert. Datum: NAVD 1988  
 US Survey Feet  
 2006

Point Name: **8049**

**Designation:** (A1) 8049 Dickinson Co GPS Control Pt (Set by Patrick Engineering in 2002)

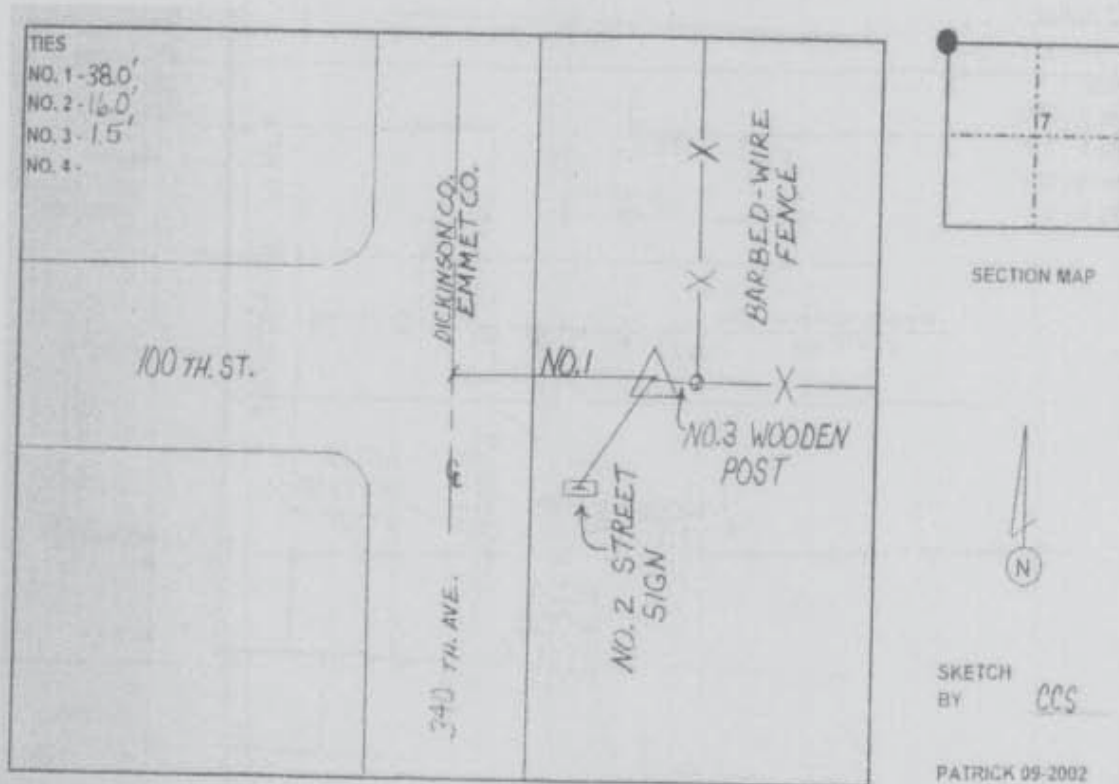
Northing: **4013187.33sft** Easting: **4545969.19sft**

Orthometric Height: **1386.49sft** Ellipsoid Height: **1294.84sft** **Geoid03**

Latitude: **43°30'03.20901"N** Longitude: **94°54'51.61778"W**

Mapping Angle: **-0°57'31"** Combination Scale Factor: **0.99998944**

**Monument Type:** Berntsen monument with 2-1/2" aluminum disk on rod with 6" access cover.



*This document was prepared by DCI and GBC for use by Emmet County, Iowa.*