

Emmet County, Iowa
Iowa North Zone (1401)
Horiz. Datum: NAD83(1996)
Vert. Datum: NAVD 1988
US Survey Feet
2006

Point Name: 8050

Designation: (F1) 8050 Dickinson Co GPS Control Pt (Set by Patrick Engineering in 2002)

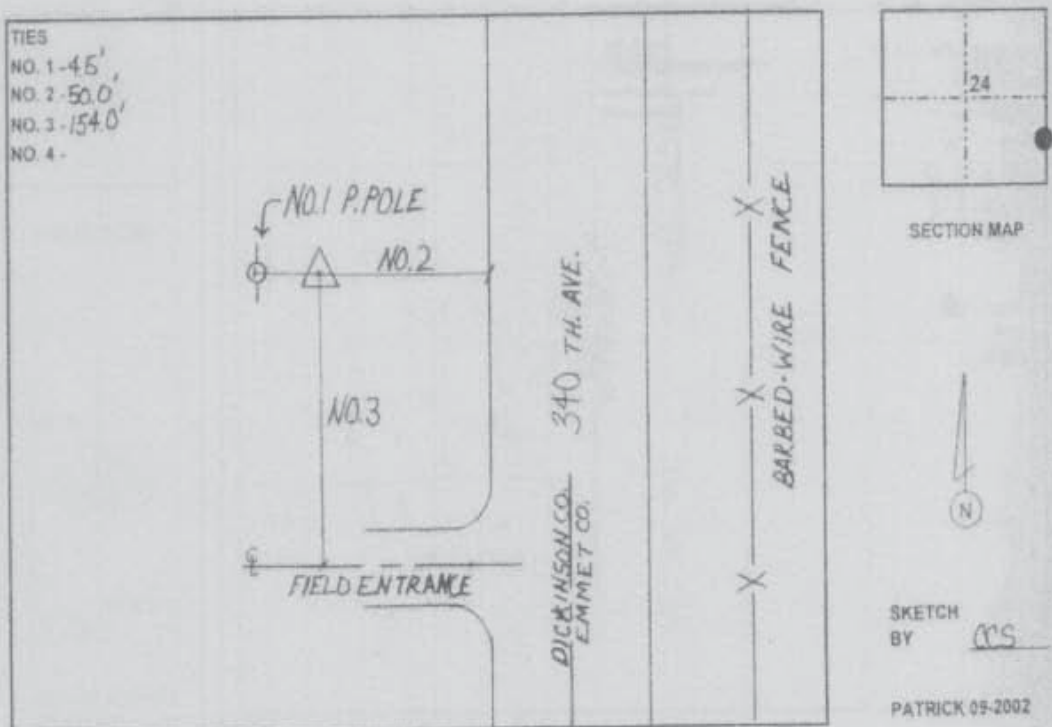
Northing: 3999479.07sft Easting: 4545599.26sft

Orthometric Height: 1421.87sft Ellipsoid Height: 1329.90sft Geoid03

Latitude: 43°27'47.78572"N Longitude: 94°54'53.52336"W

Mapping Angle: -0°57'32" Combination Scale Factor: 0.99997840

Monument Type: Berntsen monument with 2-1/2" aluminum disk on rod with 6" access cover.



This document was prepared by DCI and GBC for use by Emmet County, Iowa.