

Emmet County, Iowa
Iowa North Zone (1401)
Horiz. Datum: NAD83(1996)
Vert. Datum: NAVD 1988
US Survey Feet
2006

Point Name: 8051

Designation: (K1) 8051 Dickinson Co GPS Control Pt (Set by Patrick Engineering in 2002)

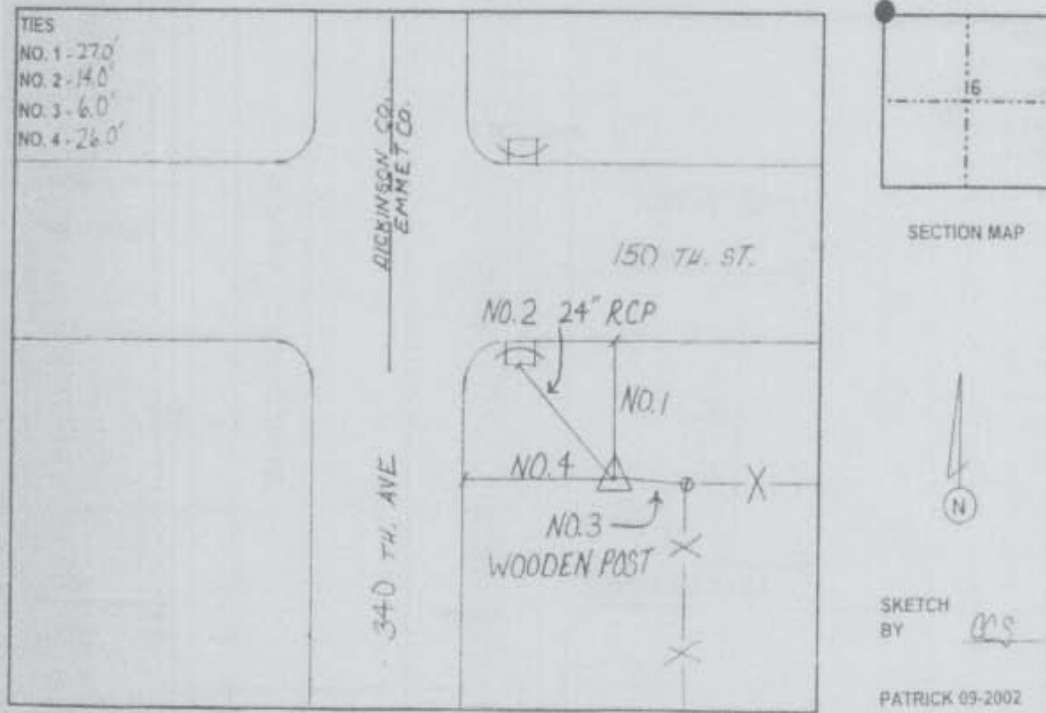
Northing: 3987464.77sft Easting: 4545571.56sft

Orthometric Height: 1517.87sft Ellipsoid Height: 1425.62sft Geoid03

Latitude: 43°25'49.14423"N Longitude: 94°54'51.17398"W

Mapping Angle: -0°57'31" Combination Scale Factor: 0.99996599

Monument Type: Berntsen monument with 2-1/2" aluminum disk on rod with 6" access cover.



This document was prepared by DCI and GBC for use by Emmet County, Iowa.