

Emmet County, Iowa
Iowa North Zone (1401)
Horiz. Datum: NAD83(1996)
Vert. Datum: NAVD 1988
US Survey Feet
2006

Point Name: 8052

Designation: (R1) 8052 Dickinson Co GPS Control Pt (Set by Patrick Engineering in 2002)

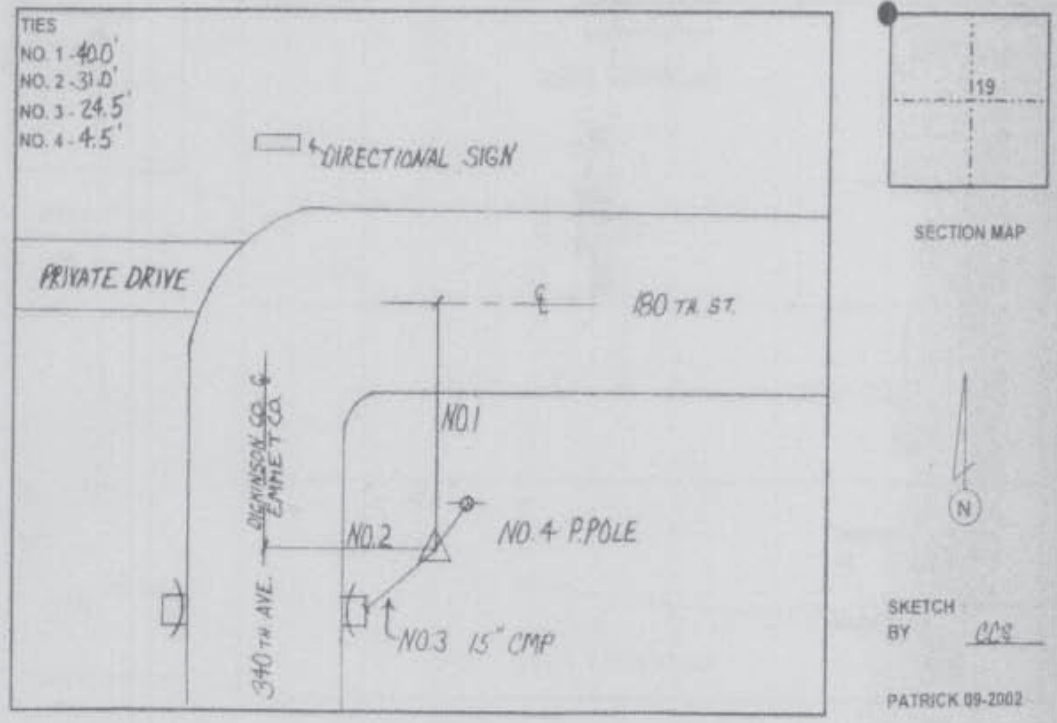
Northing: 3970877.45sft Easting: 4545349.24sft

Orthometric Height: 1446.58sft Ellipsoid Height: 1353.95sft **Geoid03**

Latitude: 43°23'05.31103"N Longitude: 94°54'50.42677"W

Mapping Angle: -0°57'30" Combination Scale Factor: 0.99995913

Monument Type: Berntsen monument with 2-1/2" aluminum disk on rod with 6" access cover.



This document was prepared by DCI and GBC for use by Emmet County, Iowa.