

Emmet County, Iowa
Iowa North Zone (1401)
Horiz. Datum: NAD83(1996)
Vert. Datum: NAVD 1988
US Survey Feet
2006

Point Name: 8053

Designation: (X1) 8053 Dickinson Co GPS Control Pt (Set by Patrick Engineering in 2002)

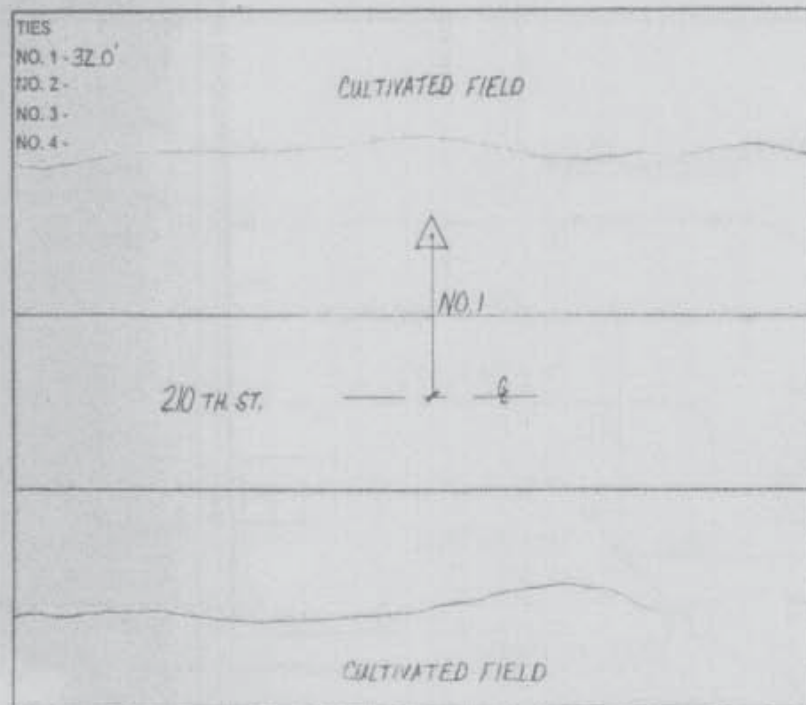
Northing: 3955141.17sft Easting: 4543674.42sft

Orthometric Height: 1437.96sft Ellipsoid Height: 1344.96sft Geoid03

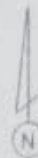
Latitude: 43°20'29.63858"N Longitude: 94°55'09.52546"W

Mapping Angle: -0°57'43" Combination Scale Factor: 0.99995038

Monument Type: Berntsen monument with 2-1/2" aluminum disk on rod with 6" access cover.



SECTION MAP



SKETCH
BY PCS

PATRICK 09-2002

This document was prepared by DCI and GBC for use by Emmet County, Iowa.