

Emmet County, Iowa
 Iowa North Zone (1401)
 Horiz. Datum: NAD83(1996)
 Vert. Datum: NAVD 1988
 US Survey Feet
2006

Point Name: **8054**

Designation: (DD1) 8054 Dickinson Co GPS Control Pt (Set by Patrick Engineering in 2002)

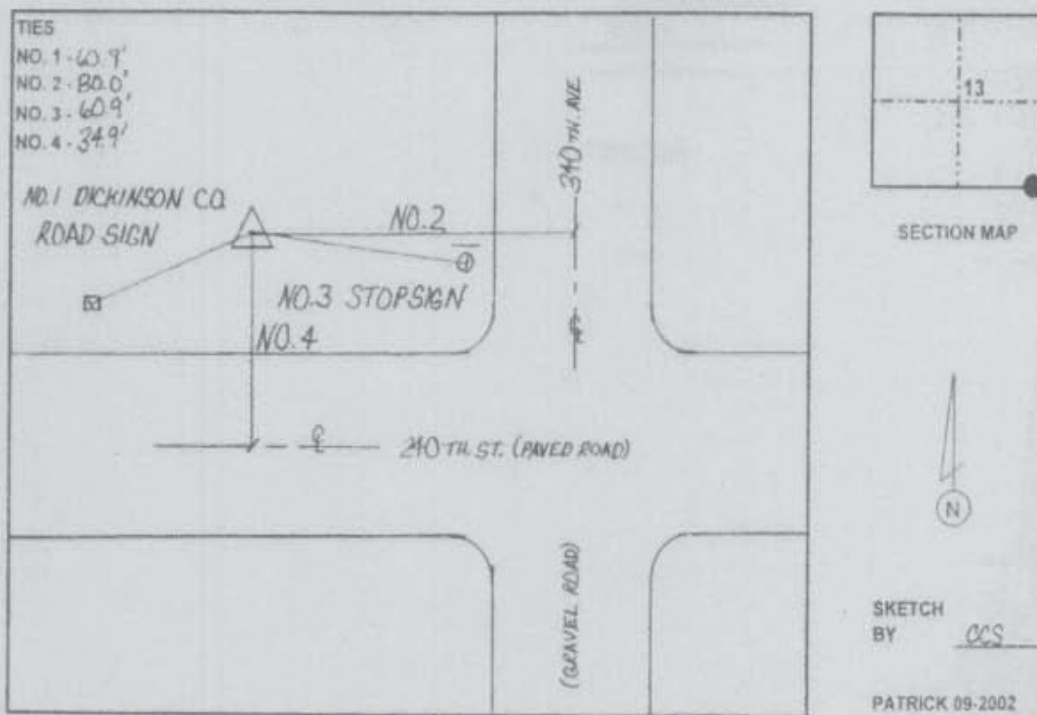
Northing: **3939456.03sft** Easting: **4544752.39sft**

Orthometric Height: **1431.13sft** Ellipsoid Height: **1337.80sft** **Geoid03**

Latitude: **43°17'54.92420"N** Longitude: **94°54'51.39000"W**

Mapping Angle: **-0°57'31"** Combination Scale Factor: **0.99994216**

Monument Type: Berntsen monument with 2-1/2" aluminum disk on rod with 6" access cover.



This document was prepared by DCI and GBC for use by Emmet County, Iowa.