

**2002**  
**Fayette County, Iowa**  
 Iowa North Zone (1401)  
 Horizontal Datum: NAD\_83(1996) & Vertical Datum: NAVD\_88

Point Number: **348**

Northing: **3764659.22 FT**

Northing: **1147470.426 M**

Easting: **5317455.54 FT**

Easting: **1620763.690 M**

Elev: **1105.97 FT**

Elev: **337.100 M**

Latitude: **N 42-49-05.31826**

Longitude: **W 092-01-23.44130**

Ellip Ht: **306.367 M**

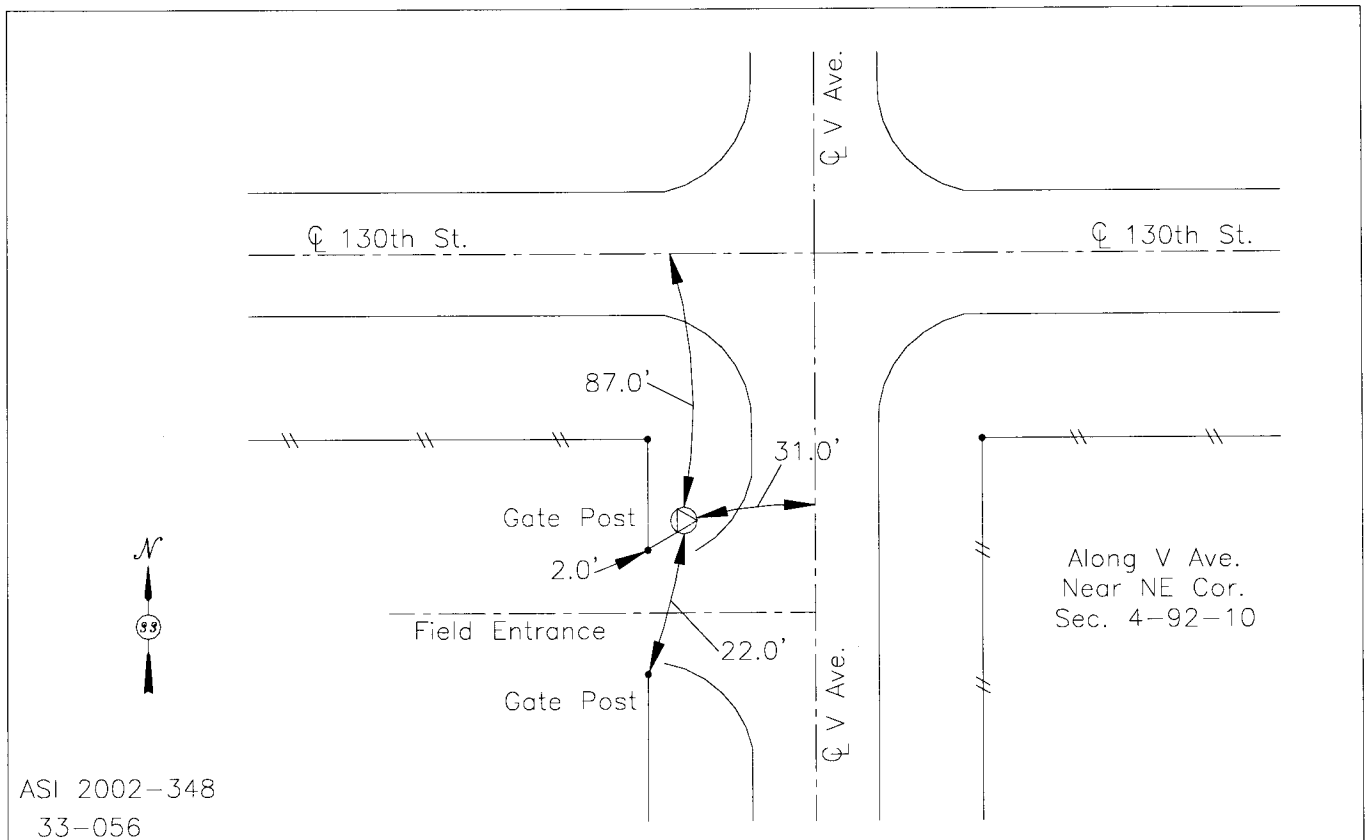
Theta: **1-00-03.269**

Combination Factor: **0.99990077**

99C Geoid Ht: **-30.733 M**

Designation: **FAYETTE COUNTY GPS CONTROL PT**

**Monument Type:** 2-1/2" dia aluminum cap set in the top of a concrete monument



ASI 2002-348  
 33-056