

2002
Fayette County, Iowa
Iowa North Zone (1401)
Horizontal Datum: NAD_83(1996) & Vertical Datum: NAVD_88

Point Number: **507**

Northing: **3792357.95 FT**

Northing: **1155913.014 M**

Easting: **5399951.61 FT**

Easting: **1645908.543 M**

Elev: **1199.46 FT**

Elev: **365.596 M**

Latitude: **N 42-53-23.14675**

Longitude: **W 091-42-48.90007**

Ellip Ht: **334.948 M**

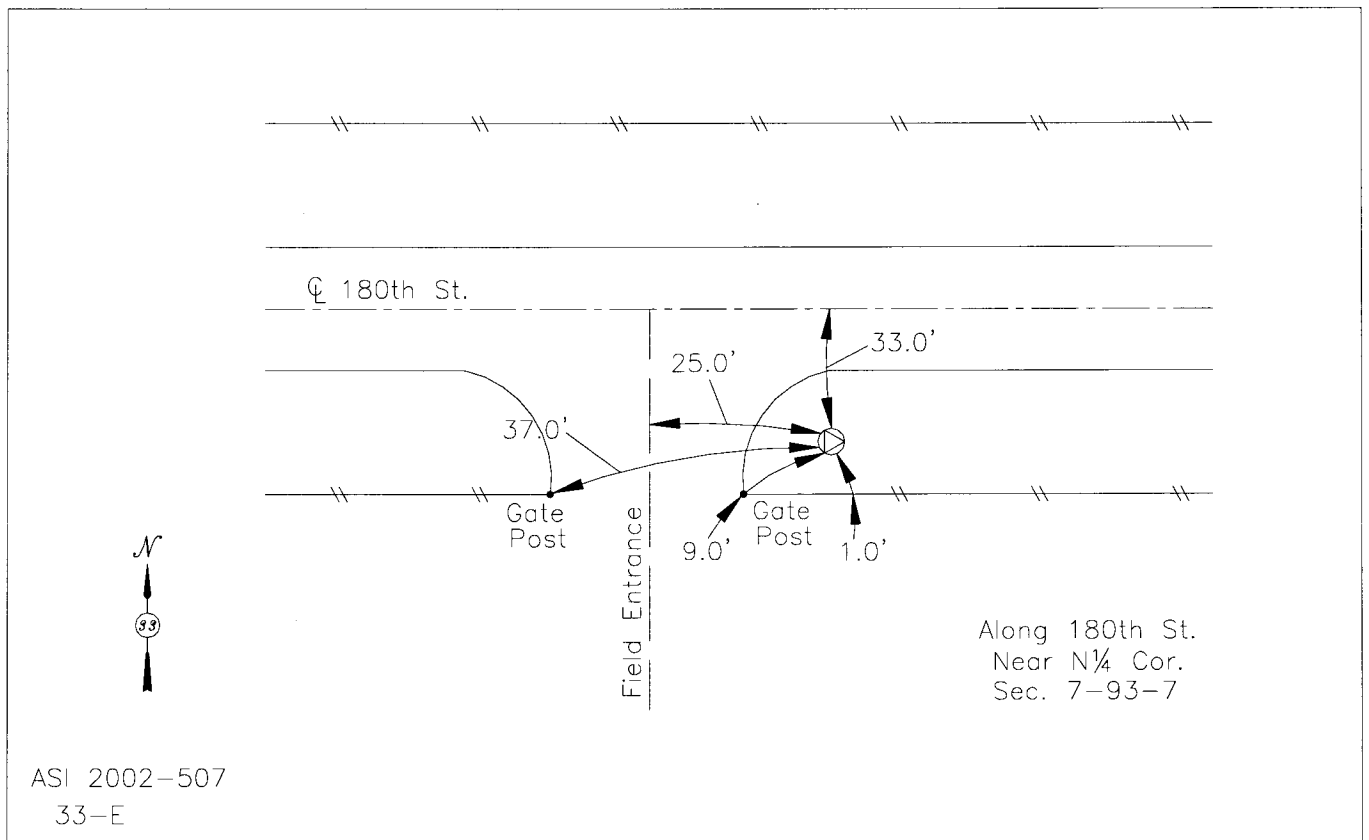
Theta: **1-12-38.643**

Combination Factor: **0.99990033**

99C Geoid Ht: **-30.648 M**

Designation: **NGS second order horizontal control station "ILLYRIA" PID NJ0797**

Monument Type: A standard triangulation station disk set in the top of a concrete monument



ASI 2002-507
33-E