

Fremont County, Iowa

Horizontal Datum: **NAD 83(2011)** - Vertical Datum: **NAVD 1988**

Iowa State Plane South Zone (1402)

Iowa Regional Coordinate System Zone 6 Council Bluffs

US Survey Feet

2015

Point Name: **1**

Designation: 2010-001 Fremont Co GPS Control Pt (Set by DCI in 2010)

NAD 83(NA2011) Latitude: **N40°51'46.24336"** Longitude: **W95°47'46.87563"**

NAVD 88 Ortho Height: **938.906sft** Ellip. Ht: **845.566sft** **Geoid12A**

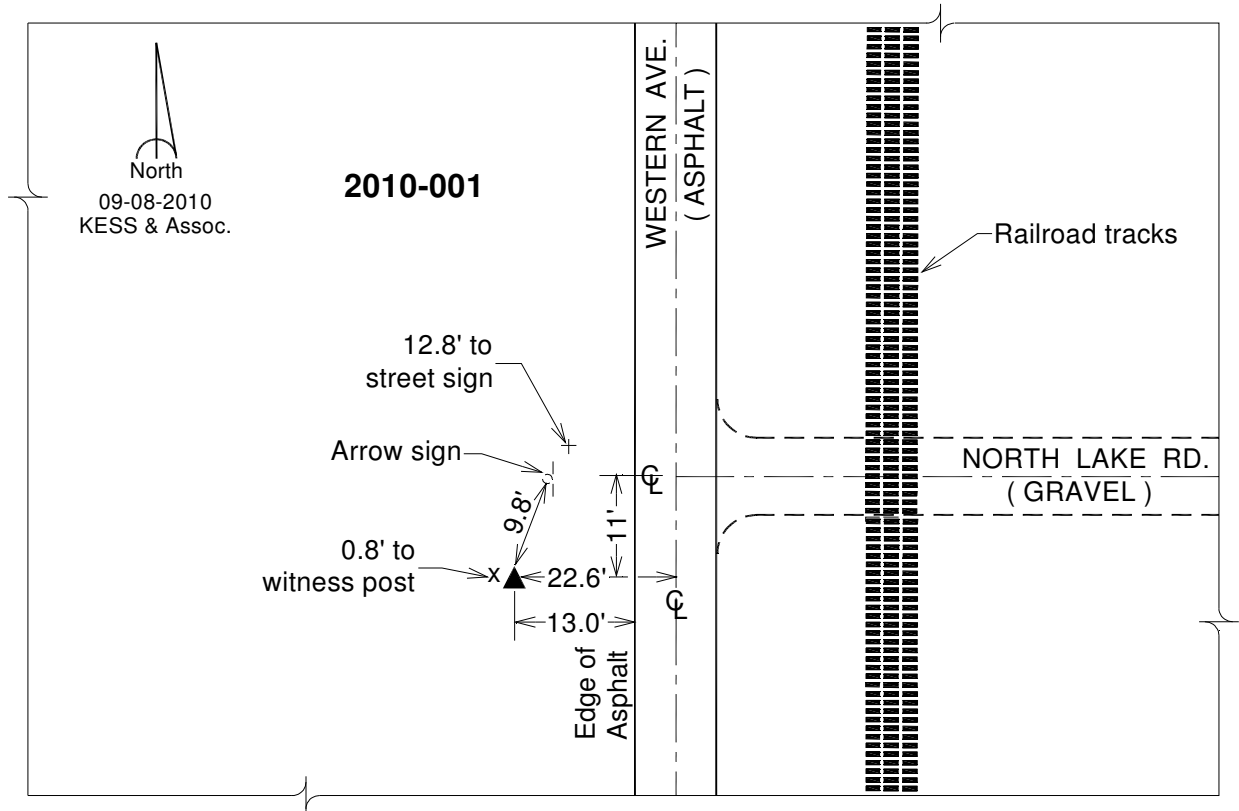
Iowa South Zone (1402) Northing: **322744.586sft** Easting: **1005329.324sft**

Mapping Angle: **-1°30'45"** Combination Scale Factor: **0.999925329**

IaRCS Zone 6 Northing: **6823287.588sft** Easting: **16482567.398sft**

Mapping Angle: **-0°02'28"** Combination Scale Factor: **0.999998997**

Monument Type: Berntsen 3/4" Top Security Rod Monument with a 2-1/2" dia. domed survey cap and permanent magnet encased in a white PVC pipe with a NGS style alum. access cover.



This document was prepared by DCI on January 9, 2015 for use by Fremont County, Iowa