

Fremont County, Iowa

Horizontal Datum: **NAD 83(2011)** - Vertical Datum: **NAVD 1988**
Iowa State Plane South Zone (1402)
Iowa Regional Coordinate System Zone 6 Council Bluffs
US Survey Feet
2015

Point Name: **2**

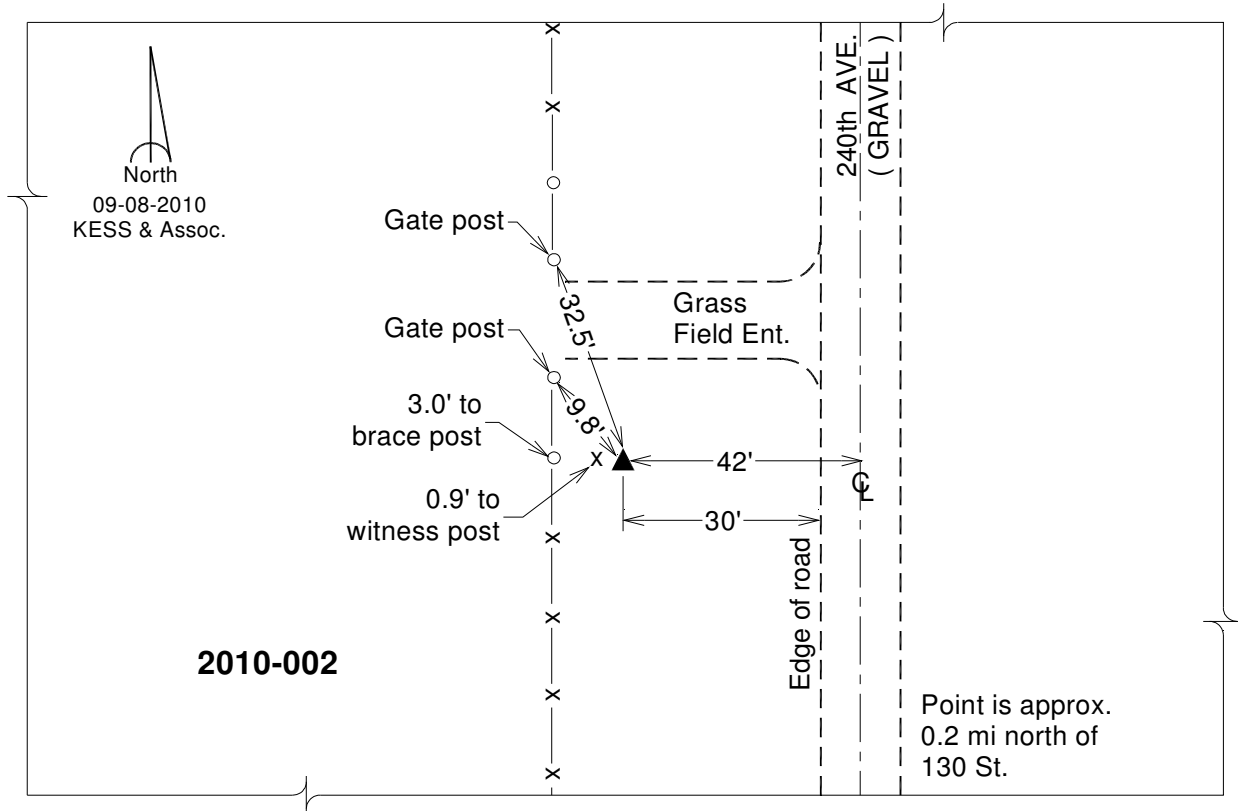
Designation: 2010-002 Fremont Co GPS Control Pt (Set by DCI in 2010)

NAD 83(NA2011) Latitude: **N40°51'40.89379"** Longitude: **W95°43'40.42825"**
NAVD 88 Ortho Height: **1161.721sft** Ellip. Ht: **1067.322sft** **Geoid12A**

Iowa South Zone (1402) Northing: **321710.996sft** Easting: **1024244.116sft**
Mapping Angle: **-1°28'03"** Combination Scale Factor: **0.999914901**

IaRCS Zone 6 Northing: **6822739.934sft** Easting: **16501503.882sft**
Mapping Angle: **0°00'13"** Combination Scale Factor: **0.999988071**

Monument Type: Berntsen 3/4" Top Security Rod Monument with a 2-1/2" dia. domed survey cap and permanent magnet encased in a white PVC pipe with a NGS style alum. access cover.



This document was prepared by DCI on January 9, 2015 for use by Fremont County, Iowa