

**Fremont County, Iowa**

Horizontal Datum: **NAD 83(2011)** - Vertical Datum: **NAVD 1988**

Iowa State Plane South Zone (1402)

Iowa Regional Coordinate System Zone 6 Council Bluffs

US Survey Feet

**2015**

Point Name: **5**

**Designation:** 2010-005 Fremont Co GPS Control Pt (Set by DCI in 2010)

NAD 83(NA2011) Latitude: **N40°51'27.28517"** Longitude: **W95°33'22.03050"**

NAVD 88 Ortho Height: **997.251sft** Ellip. Ht: **900.253sft** **Geoid12A**

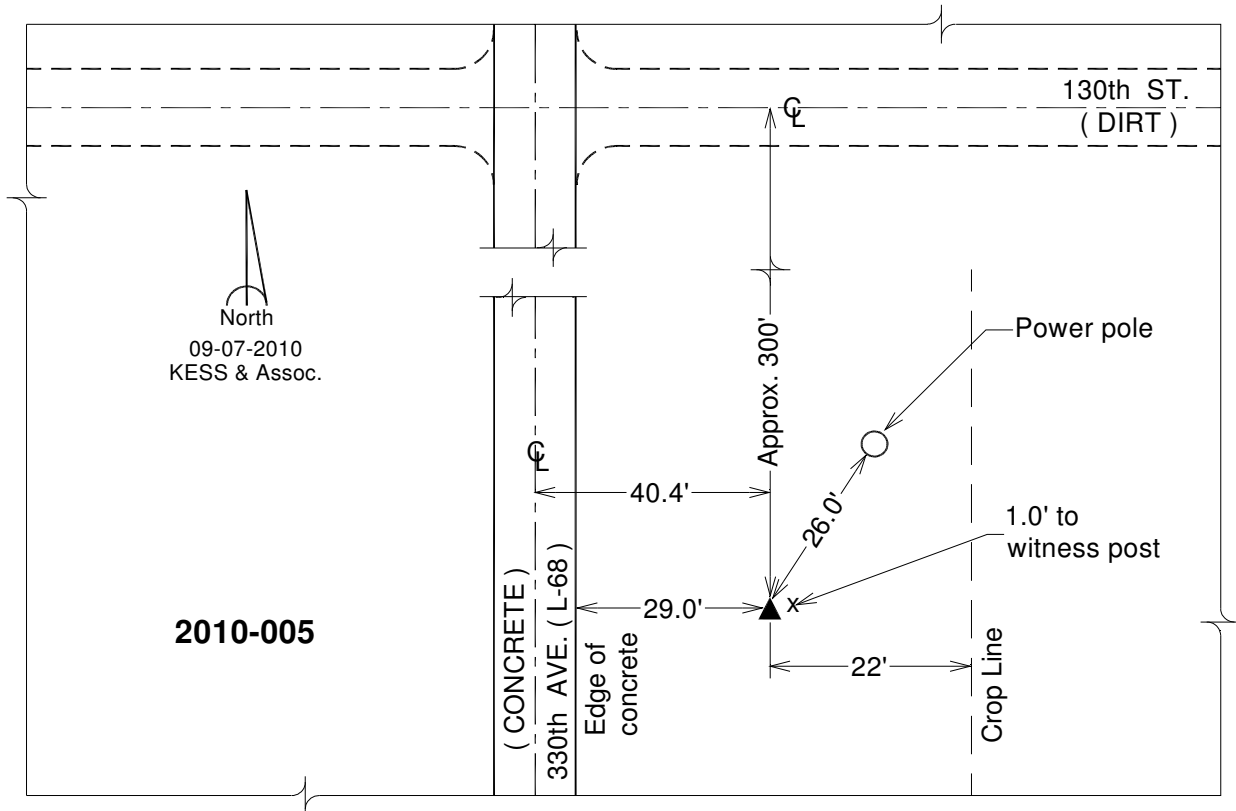
Iowa South Zone (1402) Northing: **319164.219sft** Easting: **1071710.996sft**

Mapping Angle: **-1°21'16"** Combination Scale Factor: **0.999923263**

IaRCS Zone 6 Northing: **6821412.161sft** Easting: **16549024.002sft**

Mapping Angle: **0°06'57"** Combination Scale Factor: **0.999998787**

**Monument Type:** Berntsen 3/4" Top Security Rod Monument with a 2-1/2" dia. domed survey cap and permanent magnet encased in a white PVC pipe with a NGS style alum. access cover.



*This document was prepared by DCI on January 9, 2015 for use by Fremont County, Iowa*