

Fremont County, Iowa

Horizontal Datum: **NAD 83(2011)** - Vertical Datum: **NAVD 1988**
Iowa State Plane South Zone (1402)
Iowa Regional Coordinate System Zone 6 Council Bluffs
US Survey Feet
2015

Point Name: **7**

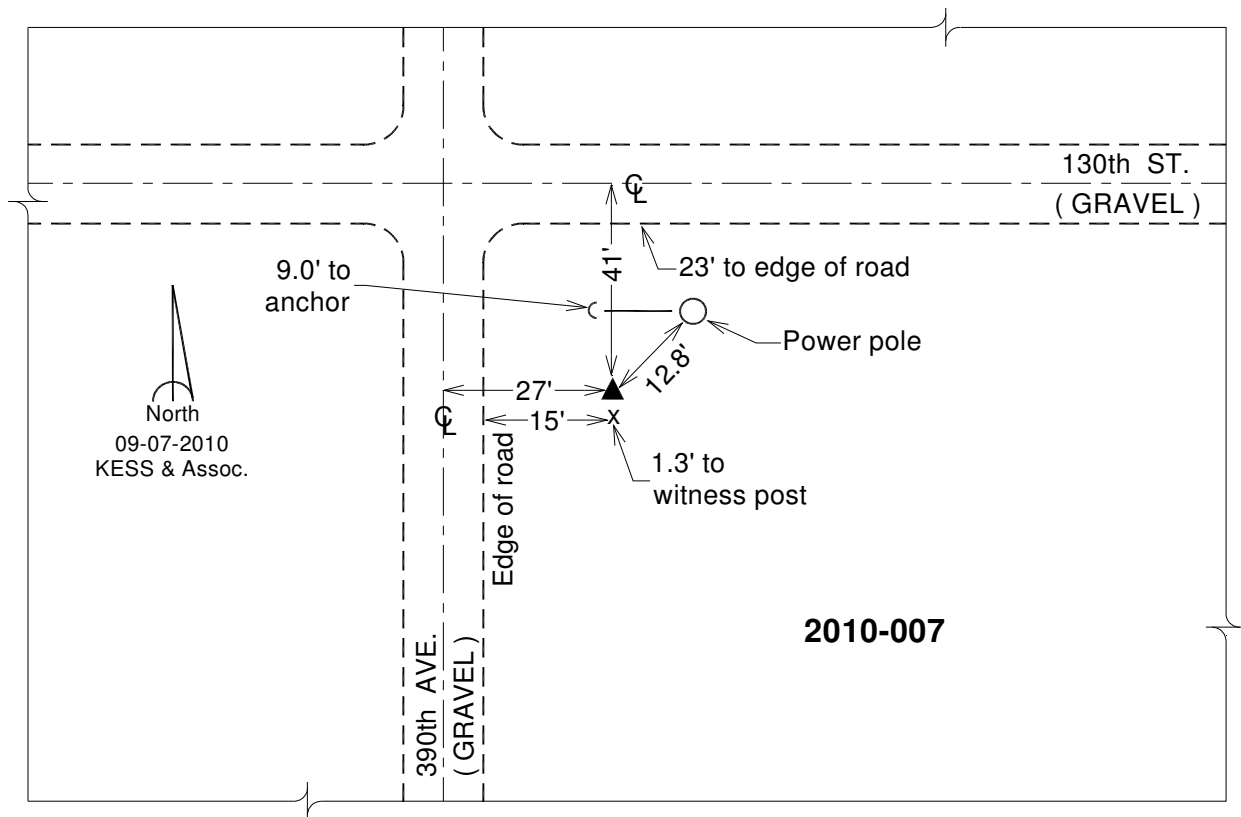
Designation: 2010-007 Fremont Co GPS Control Pt (Set by DCI in 2010)

NAD 83(NA2011) Latitude: **N40°51'29.16012"** Longitude: **W95°26'29.83881"**
NAVD 88 Ortho Height: **1105.940sft** Ellip. Ht: **1007.657sft** **Geoid12A**

Iowa South Zone (1402) Northing: **318626.160sft** Easting: **1103378.930sft**
Mapping Angle: **-1°16'44"** Combination Scale Factor: **0.999918084**

IaRCS Zone 6 Northing: **6821686.716sft** Easting: **16580697.778sft**
Mapping Angle: **0°11'27"** Combination Scale Factor: **0.999998358**

Monument Type: Berntsen 3/4" Top Security Rod Monument with a 2-1/2" dia. domed survey cap and permanent magnet encased in a white PVC pipe with a NGS style alum. access cover.



This document was prepared by DCI on January 9, 2015 for use by Fremont County, Iowa