

Fremont County, Iowa
Horizontal Datum: **NAD 83(2011)** - Vertical Datum: **NAVD 1988**
Iowa State Plane South Zone (1402)
Iowa Regional Coordinate System Zone 6 Council Bluffs
US Survey Feet
2015

Point Name: **8**

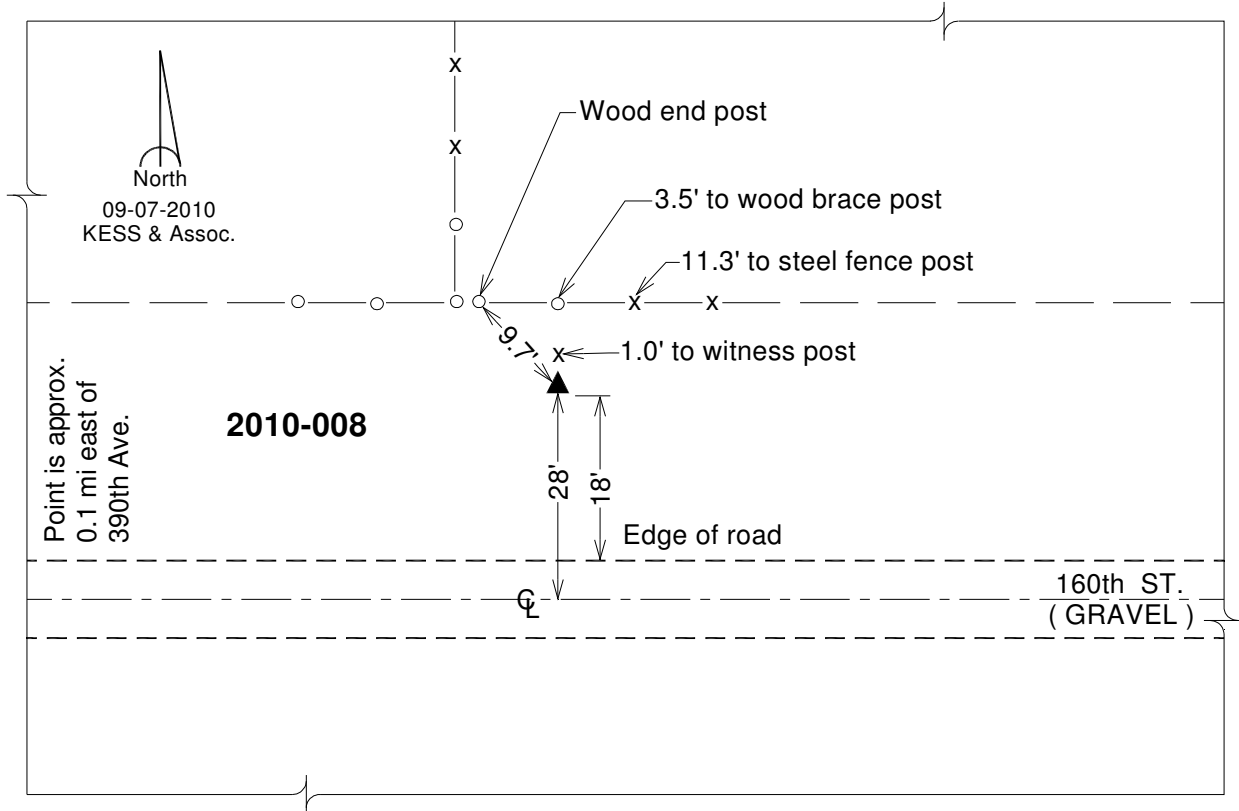
Designation: 2010-008 Fremont Co GPS Control Pt (Set by DCI in 2010)

NAD 83(NA2011) Latitude: **N40°48'53.69051"** Longitude: **W95°26'25.33279"**
NAVD 88 Ortho Height: **999.065sft** Ellip. Ht: **900.105sft** **Geoid12A**

Iowa South Zone (1402) Northing: **302888.500sft** Easting: **1103374.122sft**
Mapping Angle: **-1°16'41"** Combination Scale Factor: **0.999927977**

IaRCS Zone 6 Northing: **6805952.884sft** Easting: **16581096.647sft**
Mapping Angle: **0°11'29"** Combination Scale Factor: **1.000003564**

Monument Type: Berntsen 3/4" Top Security Rod Monument with a 2-1/2" dia. domed survey cap and permanent magnet encased in a white PVC pipe with a NGS style alum. access cover.



This document was prepared by DCI on January 9, 2015 for use by Fremont County, Iowa