

Fremont County, Iowa

Horizontal Datum: **NAD 83(2011)** - Vertical Datum: **NAVD 1988**

Iowa State Plane South Zone (1402)

Iowa Regional Coordinate System Zone 6 Council Bluffs

US Survey Feet

2015

Point Name: **9**

Designation: 2010-009 Fremont Co GPS Control Pt (Set by DCI in 2010)

NAD 83(NA2011) Latitude: **N40°48'53.79963"** Longitude: **W95°30'03.71259"**

NAVD 88 Ortho Height: **1088.791sft** Ellip. Ht: **990.431sft** **Geoid12A**

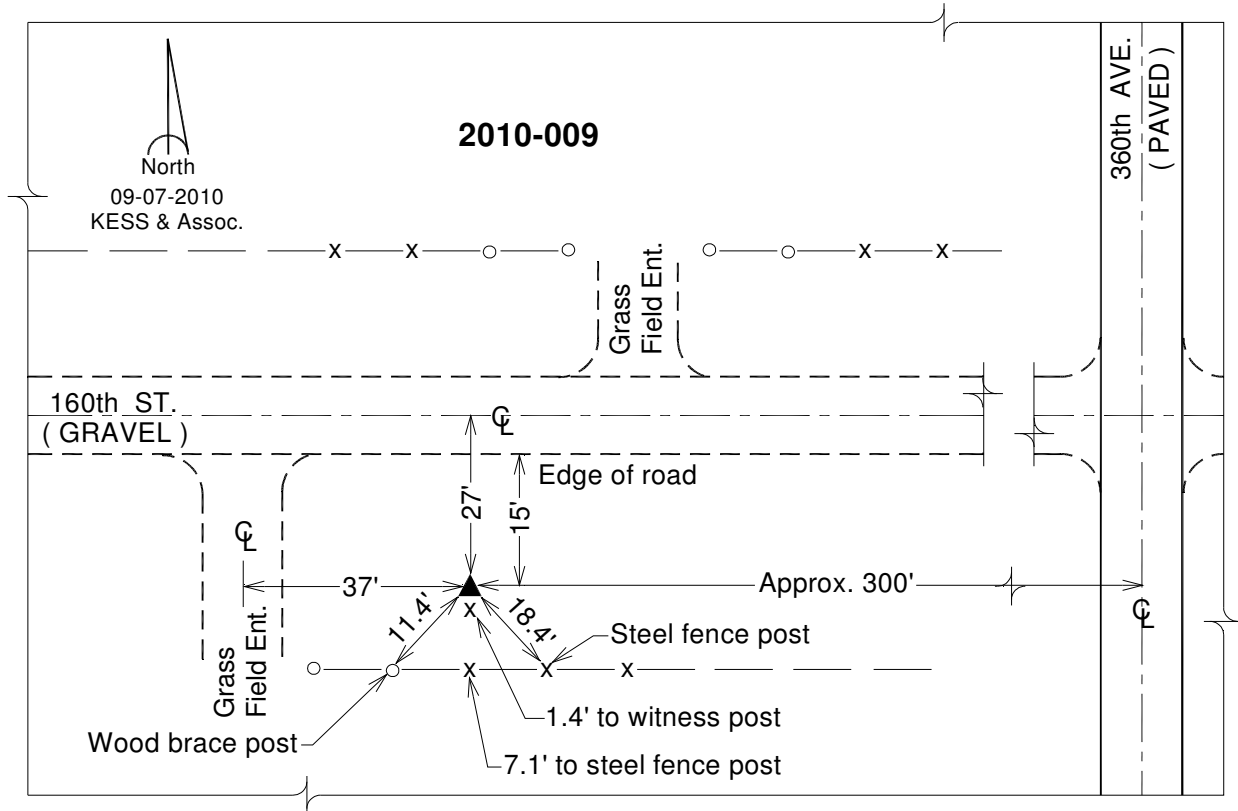
Iowa South Zone (1402) Northing: **303279.922sft** Easting: **1086587.937sft**

Mapping Angle: **-1°19'05"** Combination Scale Factor: **0.999923664**

IaRCS Zone 6 Northing: **6805913.618sft** Easting: **16564304.699sft**

Mapping Angle: **0°09'07"** Combination Scale Factor: **0.999996463**

Monument Type: Berntsen 3/4" Top Security Rod Monument with a 2-1/2" dia. domed survey cap and permanent magnet encased in a white PVC pipe with a NGS style alum. access cover.



This document was prepared by DCI on January 9, 2015 for use by Fremont County, Iowa