

Fremont County, Iowa
Horizontal Datum: **NAD 83(2011)** - Vertical Datum: **NAVD 1988**
Iowa State Plane South Zone (1402)
Iowa Regional Coordinate System Zone 6 Council Bluffs
US Survey Feet
2015

Point Name: **11**

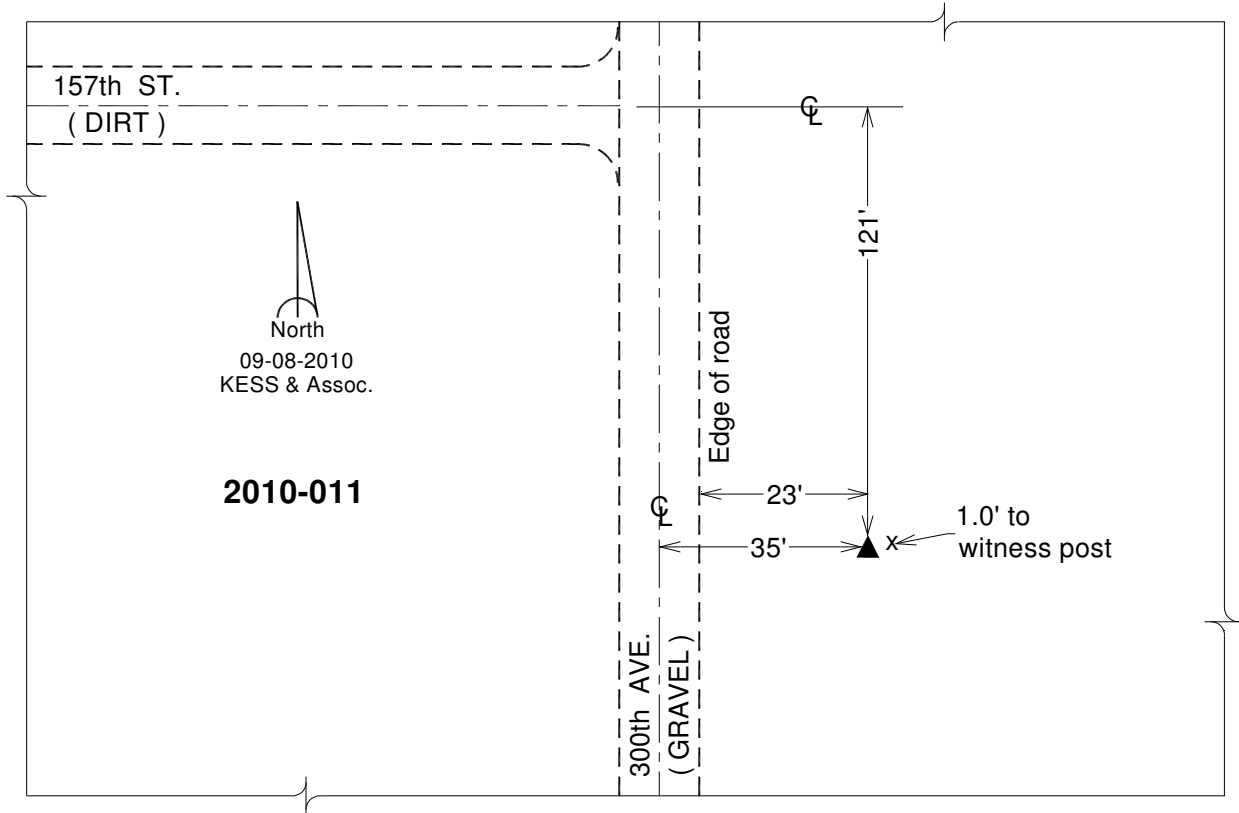
Designation: 2010-011 Fremont Co GPS Control Pt (Set by DCI in 2010)

NAD 83(NA2011) Latitude: **N40°49'05.74148"** Longitude: **W95°36'49.29352"**
NAVD 88 Ortho Height: **1004.930sft** Ellip. Ht: **907.922sft** **Geoid12A**

Iowa South Zone (1402) Northing: **305225.619sft** Easting: **1055441.802sft**
Mapping Angle: **-1°23'32"** Combination Scale Factor: **0.999927215**

IaRCS Zone 6 Northing: **6807059.635sft** Easting: **16533116.680sft**
Mapping Angle: **0°04'42"** Combination Scale Factor: **0.999996928**

Monument Type: Berntsen 3/4" Top Security Rod Monument with a 2-1/2" dia. domed survey cap and permanent magnet encased in a white PVC pipe with a NGS style alum. access cover.



This document was prepared by DCI on January 9, 2015 for use by Fremont County, Iowa