

Fremont County, Iowa
 Horizontal Datum: **NAD 83(2011)** - Vertical Datum: **NAVD 1988**
 Iowa State Plane South Zone (1402)
 Iowa Regional Coordinate System Zone 6 Council Bluffs
 US Survey Feet
2015

Point Name: **12**

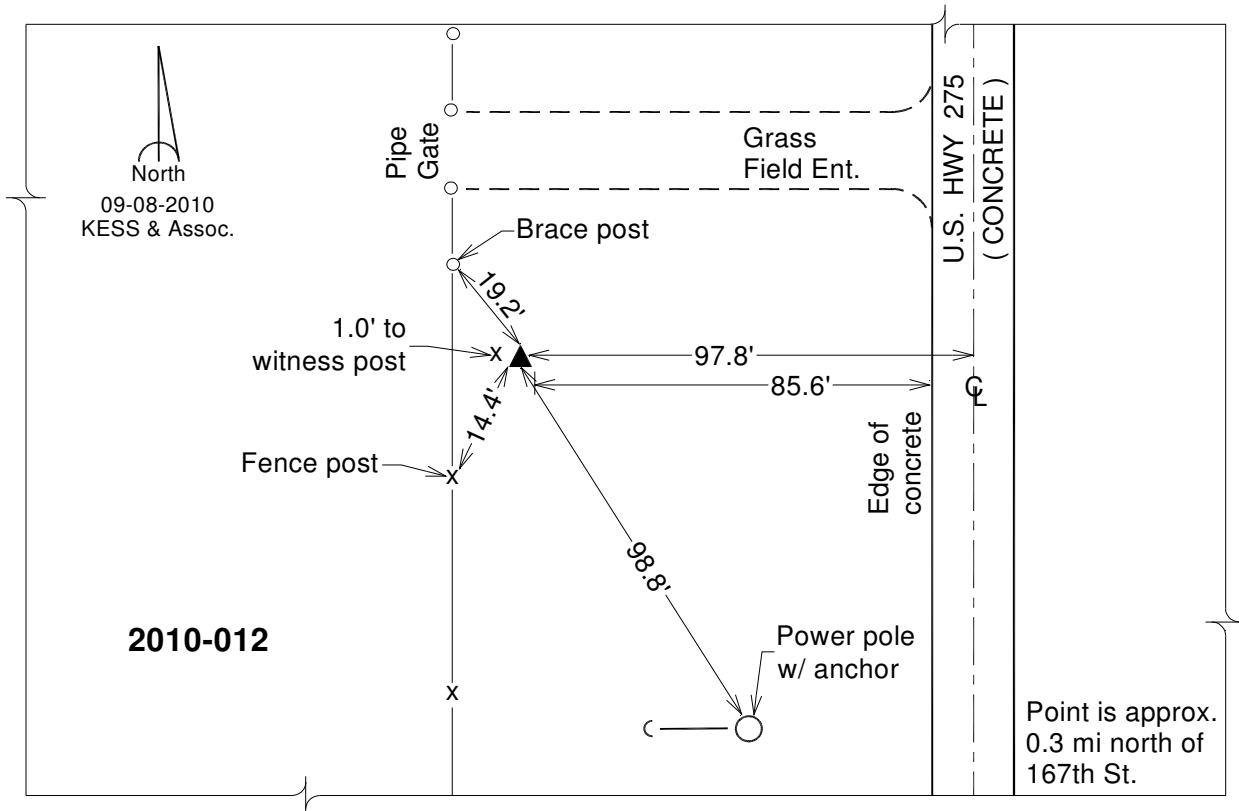
Designation: 2010-012 Fremont Co GPS Control Pt (Set by DCI in 2010)

NAD 83(NA2011) Latitude: **N40°48'31.43082"** Longitude: **W95°40'16.24975"**
 NAVD 88 Ortho Height: **1157.862sft** Ellip. Ht: **1061.466sft** **Geoid12A**

Iowa South Zone (1402) Northing: **302146.267sft** Easting: **1039448.356sft**
 Mapping Angle: **-1°25'49"** Combination Scale Factor: **0.999921006**

IaRCS Zone 6 Northing: **6803570.591sft** Easting: **16517206.440sft**
 Mapping Angle: **0°02'26"** Combination Scale Factor: **0.999988686**

Monument Type: Berntsen 3/4" Top Security Rod Monument with a 2-1/2" dia. domed survey cap and permanent magnet encased in a white PVC pipe with a NGS style alum. access cover.



This document was prepared by DCI on January 9, 2015 for use by Fremont County, Iowa