

Fremont County, Iowa

Horizontal Datum: **NAD 83(2011)** - Vertical Datum: **NAVD 1988**
Iowa State Plane South Zone (1402)
Iowa Regional Coordinate System Zone 6 Council Bluffs
US Survey Feet
2015

Point Name: **13**

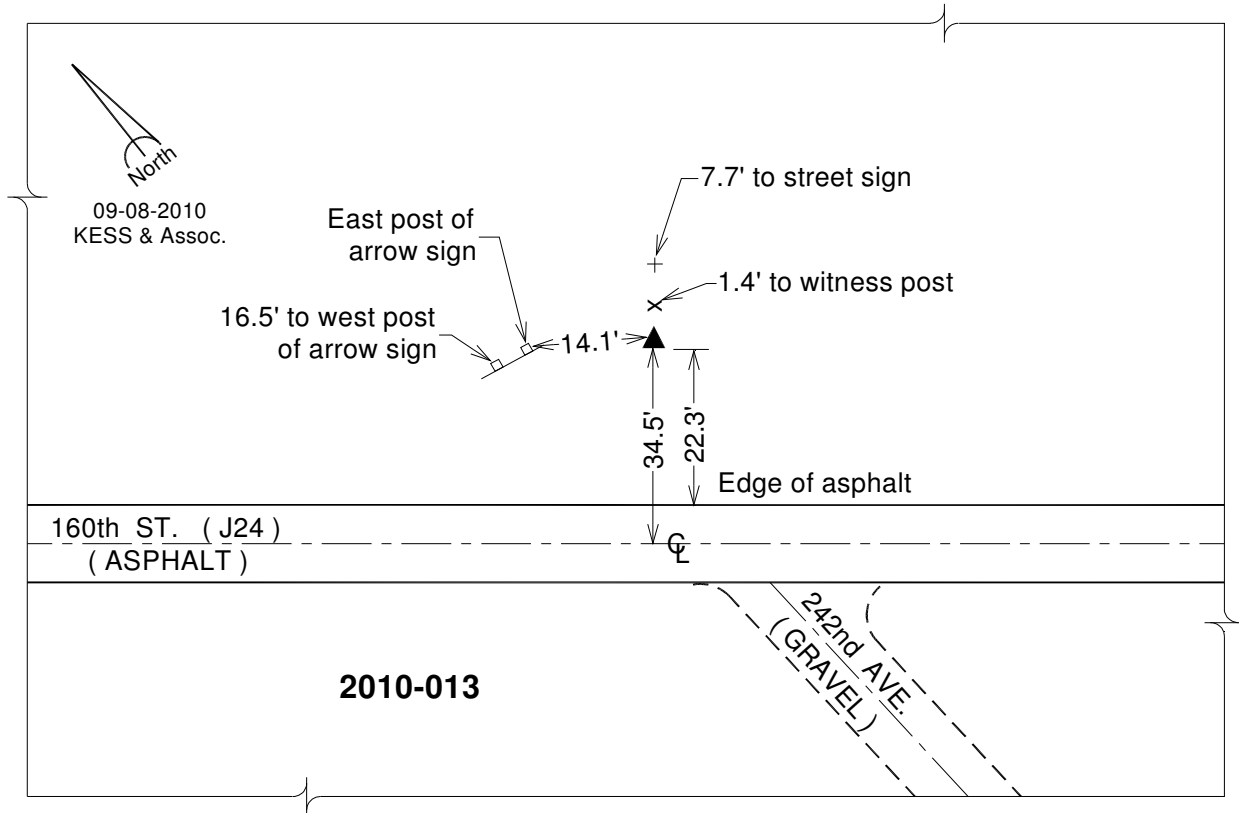
Designation: 2010-013 Fremont Co GPS Control Pt (Set by DCI in 2010)

NAD 83(NA2011) Latitude: **N40°48'58.04923"** Longitude: **W95°43'39.49112"**
NAVD 88 Ortho Height: **1035.466sft** Ellip. Ht: **939.974sft** **Geoid12A**

Iowa South Zone (1402) Northing: **305234.344sft** Easting: **1023894.084sft**
Mapping Angle: **-1°28'02"** Combination Scale Factor: **0.999925934**

IaRCS Zone 6 Northing: **6806258.561sft** Easting: **16501576.962sft**
Mapping Angle: **0°00'13"** Combination Scale Factor: **0.999994148**

Monument Type: Berntsen 3/4" Top Security Rod Monument with a 2-1/2" dia. domed survey cap and permanent magnet encased in a white PVC pipe with a NGS style alum. access cover.



This document was prepared by DCI on January 9, 2015 for use by Fremont County, Iowa