

Fremont County, Iowa
Horizontal Datum: **NAD 83(2011)** - Vertical Datum: **NAVD 1988**
Iowa State Plane South Zone (1402)
Iowa Regional Coordinate System Zone 6 Council Bluffs
US Survey Feet
2015

Point Name: **14**

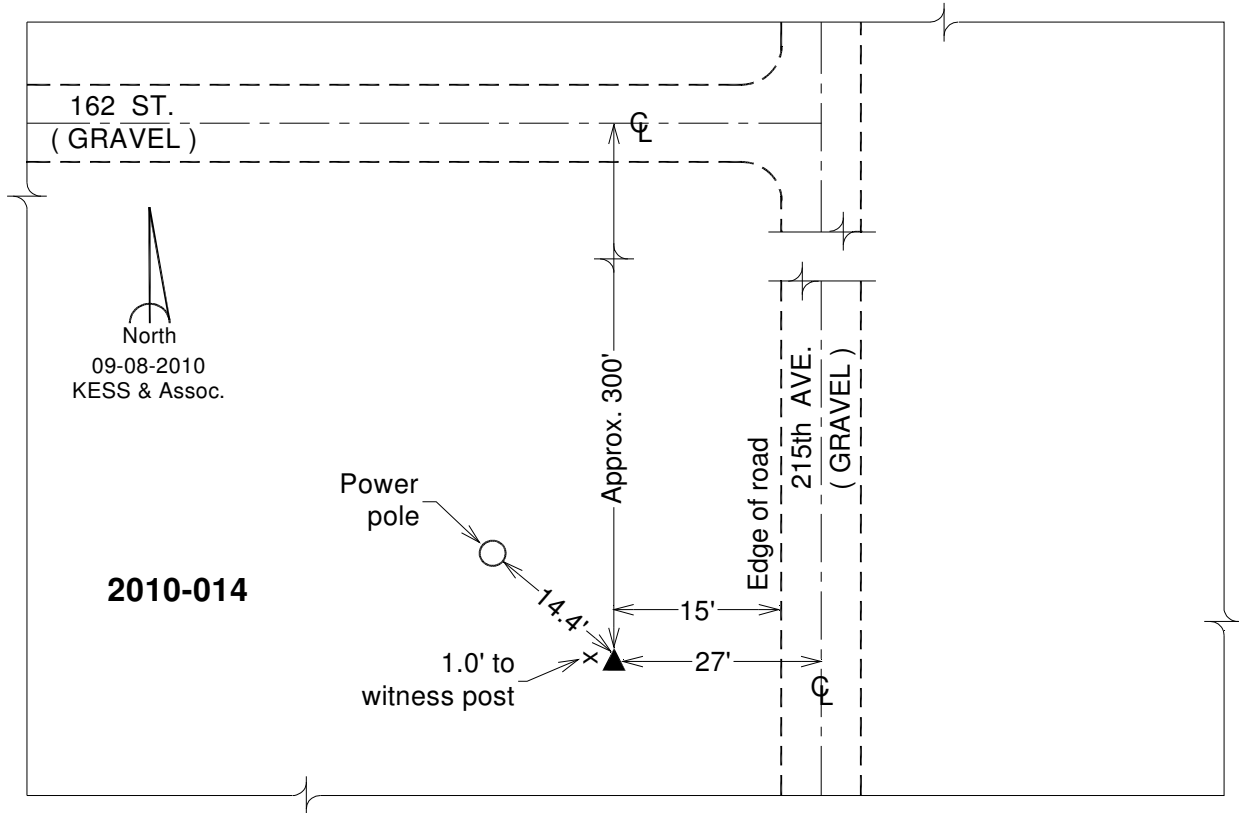
Designation: 2010-014 Fremont Co GPS Control Pt (Set by DCI in 2010)

NAD 83(NA2011) Latitude: **N40°48'27.59429"** Longitude: **W95°46'31.41696"**
NAVD 88 Ortho Height: **940.267sft** Ellip. Ht: **845.252sft** **Geoid12A**

Iowa South Zone (1402) Northing: **302495.423sft** Easting: **1010599.133sft**
Mapping Angle: **-1°29'56"** Combination Scale Factor: **0.999931449**

IaRCS Zone 6 Northing: **6803178.995sft** Easting: **16488355.818sft**
Mapping Angle: **-0°01'39"** Combination Scale Factor: **0.999998820**

Monument Type: Berntsen 3/4" Top Security Rod Monument with a 2-1/2" dia. domed survey cap and permanent magnet encased in a white PVC pipe with a NGS style alum. access cover.



This document was prepared by DCI on January 9, 2015 for use by Fremont County, Iowa