

Fremont County, Iowa
Horizontal Datum: **NAD 83(2011)** - Vertical Datum: **NAVD 1988**
Iowa State Plane South Zone (1402)
Iowa Regional Coordinate System Zone 6 Council Bluffs
US Survey Feet
2015

Point Name: **15**

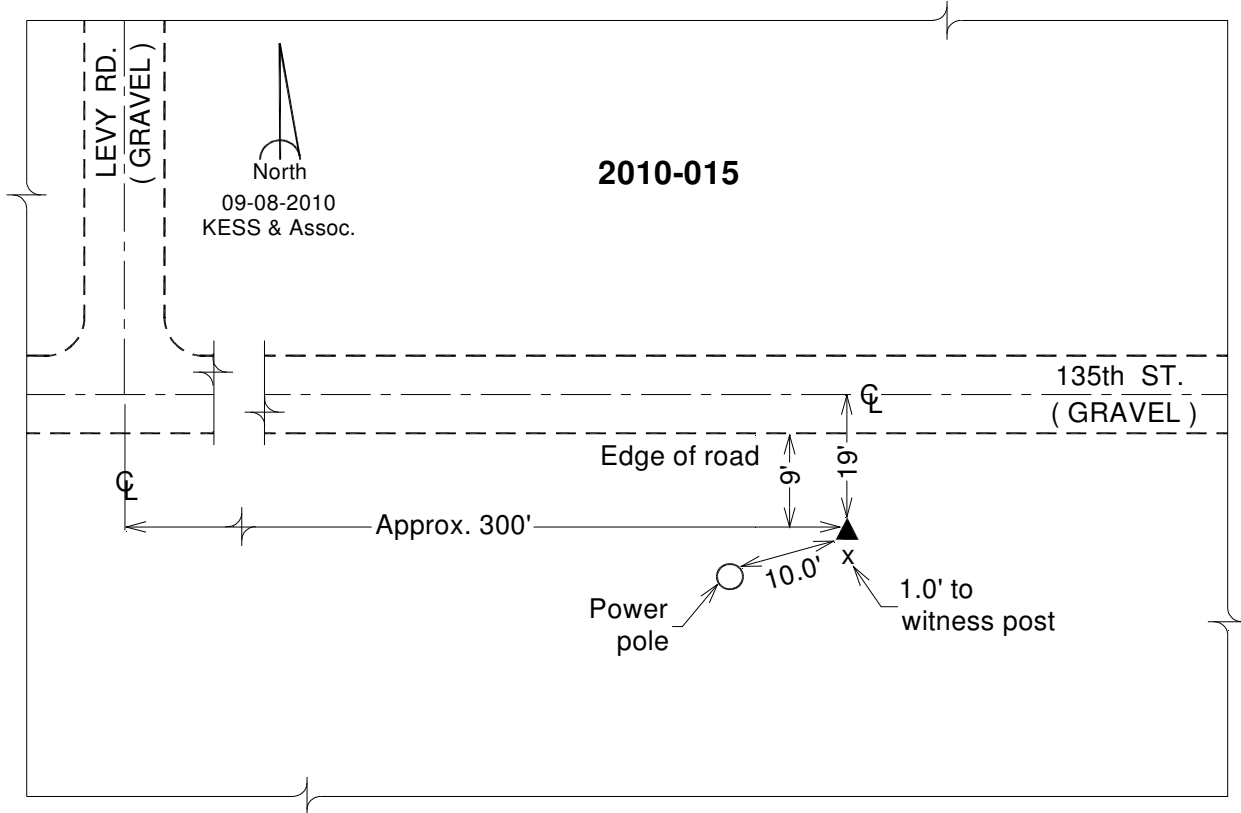
Designation: 2010-015 Fremont Co GPS Control Pt (Set by DCI in 2010)

NAD 83(NA2011) Latitude: **N40°51'02.78676"** Longitude: **W95°49'19.21937"**
NAVD 88 Ortho Height: **938.414sft** Ellip. Ht: **845.187sft** **Geoid12A**

Iowa South Zone (1402) Northing: **318536.580sft** Easting: **998119.476sft**
Mapping Angle: **-1°31'46"** Combination Scale Factor: **0.999926604**

IaRCS Zone 6 Northing: **6818895.508sft** Easting: **16475467.464sft**
Mapping Angle: **-0°03'29"** Combination Scale Factor: **0.999999356**

Monument Type: Berntsen 3/4" Top Security Rod Monument with a 2-1/2" dia. domed survey cap and permanent magnet encased in a white PVC pipe with a NGS style alum. access cover.



This document was prepared by DCI on January 9, 2015 for use by Fremont County, Iowa