

Fremont County, Iowa

Horizontal Datum: **NAD 83(2011)** - Vertical Datum: **NAVD 1988**
Iowa State Plane South Zone (1402)
Iowa Regional Coordinate System Zone 6 Council Bluffs
US Survey Feet
2015

Point Name: **16**

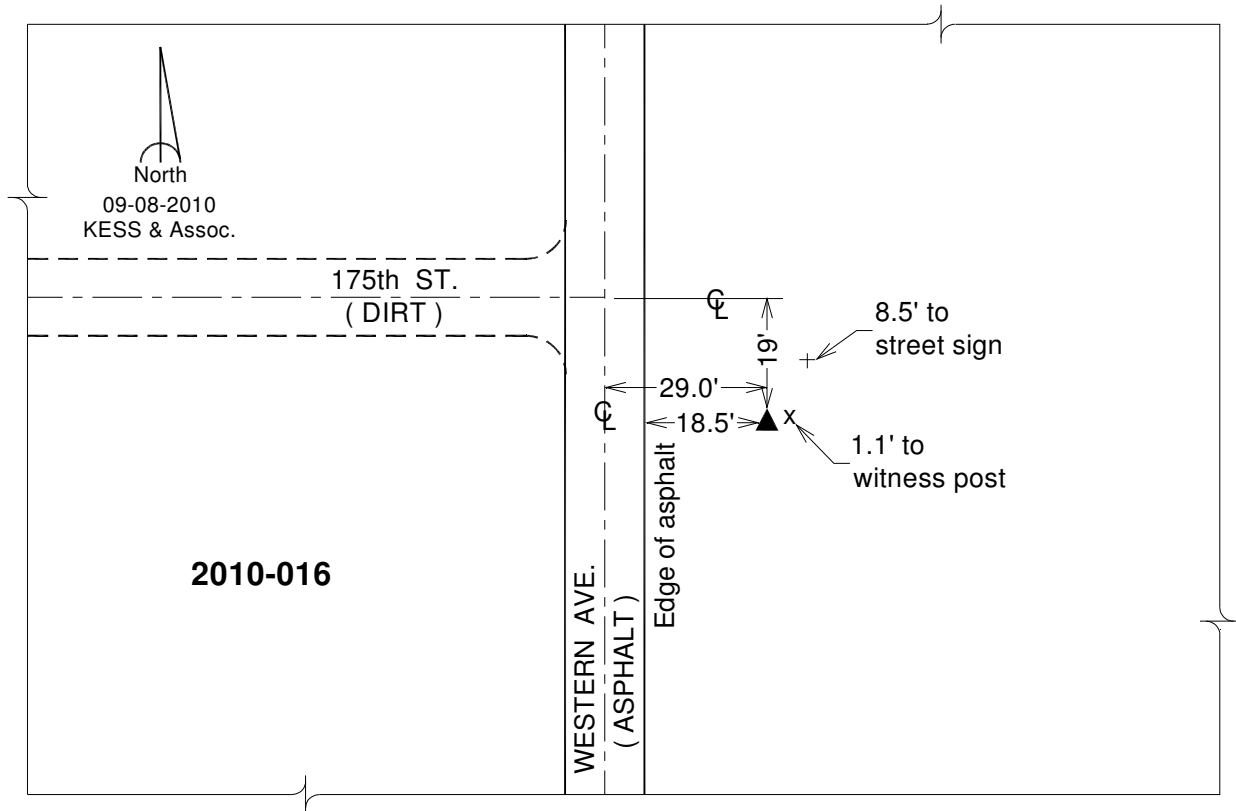
Designation: 2010-016 Fremont Co GPS Control Pt (Set by DCI in 2010)

NAD 83(NA2011) Latitude: **N40°47'37.84990"** Longitude: **W95°48'46.26482"**
NAVD 88 Ortho Height: **934.083sft** Ellip. Ht: **839.340sft** **Geoid12A**

Iowa South Zone (1402) Northing: **297736.429sft** Easting: **1000099.600sft**
Mapping Angle: **-1°31'25"** Combination Scale Factor: **0.999933404**

IaRCS Zone 6 Northing: **6798151.625sft** Easting: **16477981.258sft**
Mapping Angle: **-0°03'07"** Combination Scale Factor: **0.999999501**

Monument Type: Berntsen 3/4" Top Security Rod Monument with a 2-1/2" dia. domed survey cap and permanent magnet encased in a white PVC pipe with a NGS style alum. access cover.



This document was prepared by DCI on January 9, 2015 for use by Fremont County, Iowa