

Fremont County, Iowa
 Horizontal Datum: **NAD 83(2011)** - Vertical Datum: **NAVD 1988**
 Iowa State Plane South Zone (1402)
 Iowa Regional Coordinate System Zone 6 Council Bluffs
 US Survey Feet
2015

Point Name: **17**

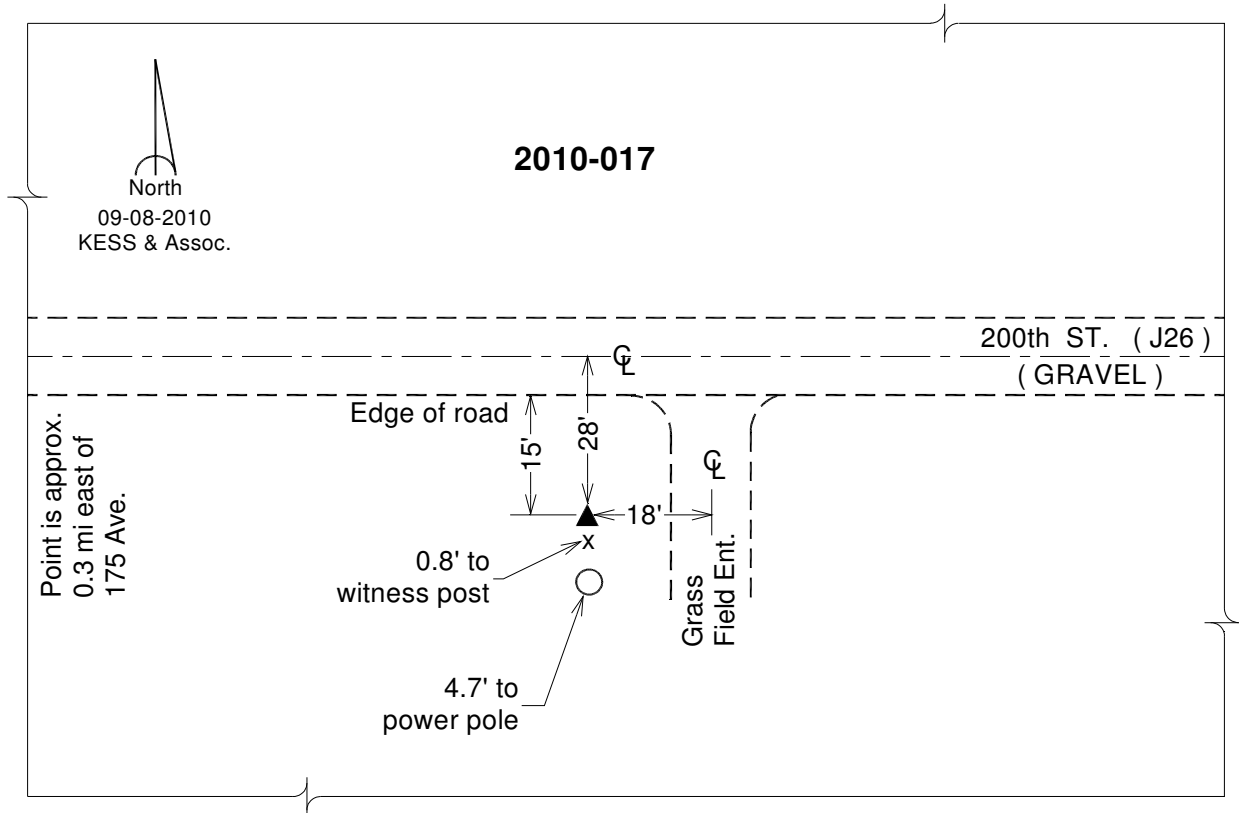
Designation: 2010-017 Fremont Co GPS Control Pt (Set by DCI in 2010)

NAD 83(NA2011) Latitude: **N40°45'29.41665"** Longitude: **W95°50'49.80229"**
 NAVD 88 Ortho Height: **932.410sft** Ellip. Ht: **837.507sft** **Geoid12A**

Iowa South Zone (1402) Northing: **284997.977sft** Easting: **990250.763sft**
 Mapping Angle: **-1°32'46"** Combination Scale Factor: **0.999938075**

IaRCS Zone 6 Northing: **6785163.603sft** Easting: **16468462.210sft**
 Mapping Angle: **-0°04'28"** Combination Scale Factor: **1.000000171**

Monument Type: Berntsen 3/4" Top Security Rod Monument with a 2-1/2" dia. domed survey cap and permanent magnet encased in a white PVC pipe with a NGS style alum. access cover.



This document was prepared by DCI on January 9, 2015 for use by Fremont County, Iowa