

Fremont County, Iowa
Horizontal Datum: **NAD 83(2011)** - Vertical Datum: **NAVD 1988**
Iowa State Plane South Zone (1402)
Iowa Regional Coordinate System Zone 6 Council Bluffs
US Survey Feet
2015

Point Name: **18**

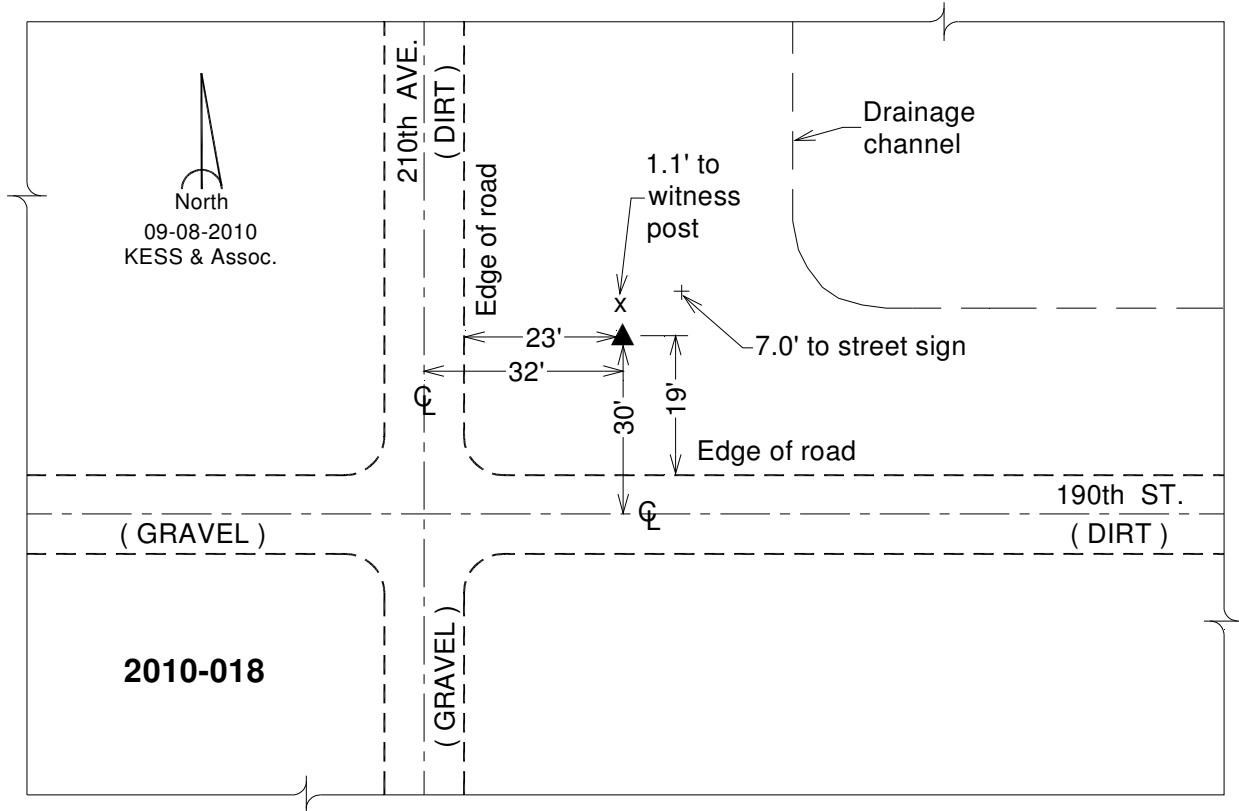
Designation: 2010-018 Fremont Co GPS Control Pt (Set by DCI in 2010)

NAD 83(NA2011) Latitude: **N40°46'22.11716"** Longitude: **W95°47'03.22257"**
NAVD 88 Ortho Height: **930.741sft** Ellip. Ht: **835.152sft** **Geoid12A**

Iowa South Zone (1402) Northing: **289865.382sft** Easting: **1007820.808sft**
Mapping Angle: **-1°30'17"** Combination Scale Factor: **0.999936260**

IaRCS Zone 6 Northing: **6790480.950sft** Easting: **16485902.552sft**
Mapping Angle: **-0°02'00"** Combination Scale Factor: **0.999999374**

Monument Type: Berntsen 3/4" Top Security Rod Monument with a 2-1/2" dia. domed survey cap and permanent magnet encased in a white PVC pipe with a NGS style alum. access cover.



This document was prepared by DCI on January 9, 2015 for use by Fremont County, Iowa