

**Fremont County, Iowa**

Horizontal Datum: **NAD 83(2011)** - Vertical Datum: **NAVD 1988**

Iowa State Plane South Zone (1402)

Iowa Regional Coordinate System Zone 6 Council Bluffs

US Survey Feet

**2015**

Point Name: **19**

**Designation:** 2010-019 Fremont Co GPS Control Pt (Set by DCI in 2010)

NAD 83(NA2011) Latitude: **N40°47'15.23481"** Longitude: **W95°43'20.95838"**

NAVD 88 Ortho Height: **1123.589sft** Ellip. Ht: **1027.459sft** **Geoid12A**

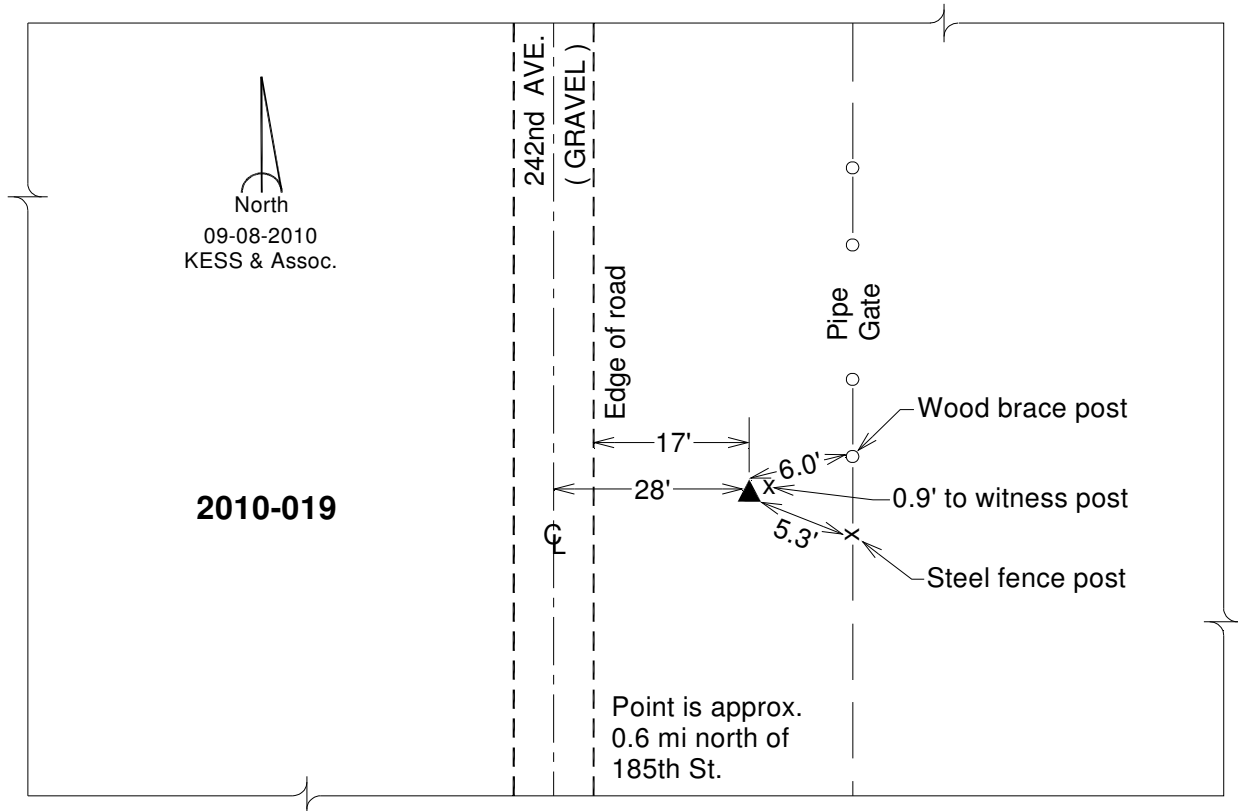
Iowa South Zone (1402) Northing: **294796.281sft** Easting: **1025052.706sft**

Mapping Angle: **-1°27'50"** Combination Scale Factor: **0.999925207**

IaRCS Zone 6 Northing: **6795852.990sft** Easting: **16503003.262sft**

Mapping Angle: **0°00'26"** Combination Scale Factor: **0.999989980**

**Monument Type:** Berntsen 3/4" Top Security Rod Monument with a 2-1/2" dia. domed survey cap and permanent magnet encased in a white PVC pipe with a NGS style alum. access cover.



*This document was prepared by DCI on January 9, 2015 for use by Fremont County, Iowa*