

Fremont County, Iowa

Horizontal Datum: **NAD 83(2011)** - Vertical Datum: **NAVD 1988**
Iowa State Plane South Zone (1402)
Iowa Regional Coordinate System Zone 6 Council Bluffs
US Survey Feet
2015

Point Name: **21**

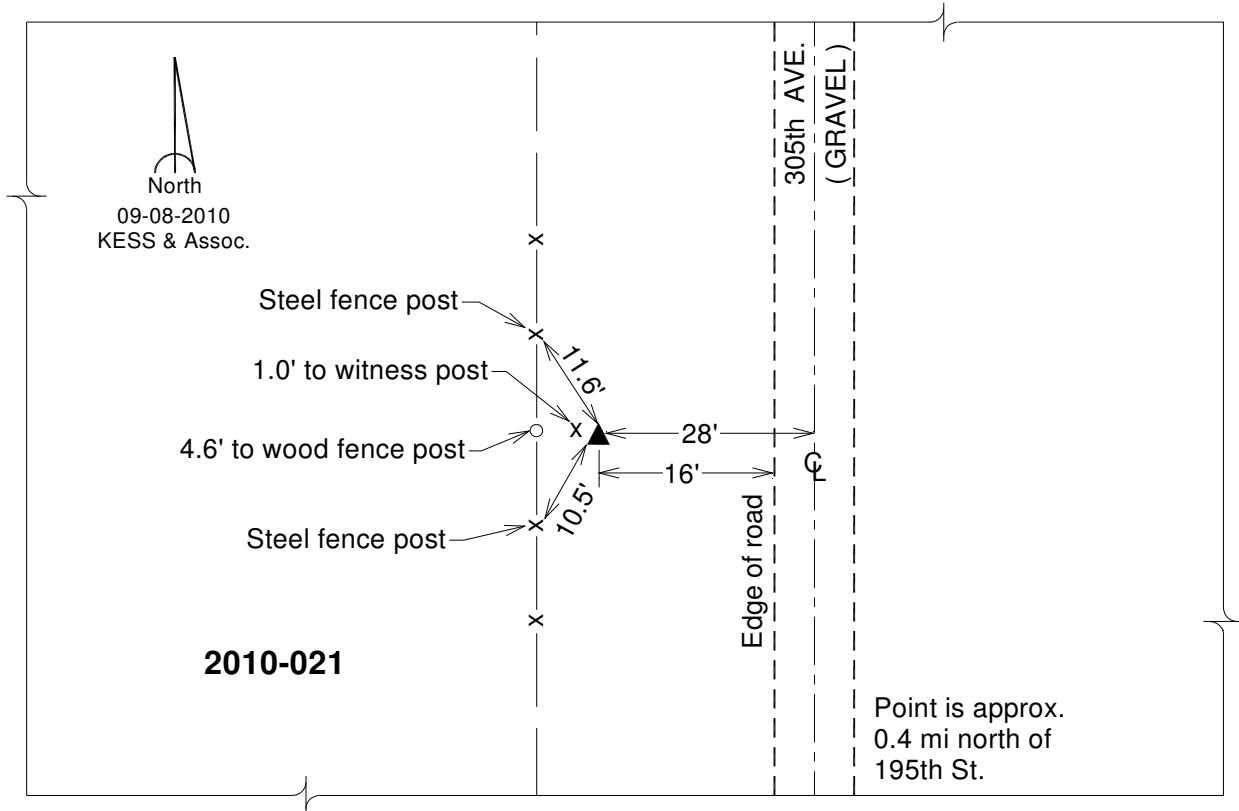
Designation: 2010-021 Fremont Co GPS Control Pt (Set by DCI in 2010)

NAD 83(NA2011) Latitude: **N40°46'20.81085"** Longitude: **W95°36'48.11598"**
NAVD 88 Ortho Height: **997.069sft** Ellip. Ht: **899.344sft** **Geoid12A**

Iowa South Zone (1402) Northing: **288537.060sft** Easting: **1055126.813sft**
Mapping Angle: **-1°23'31"** Combination Scale Factor: **0.999933244**

IaRCS Zone 6 Northing: **6790367.371sft** Easting: **16533230.056sft**
Mapping Angle: **0°04'42"** Combination Scale Factor: **0.999997345**

Monument Type: Berntsen 3/4" Top Security Rod Monument with a 2-1/2" dia. domed survey cap and permanent magnet encased in a white PVC pipe with a NGS style alum. access cover.



This document was prepared by DCI on January 9, 2015 for use by Fremont County, Iowa