

Fremont County, Iowa

Horizontal Datum: **NAD 83(2011)** - Vertical Datum: **NAVD 1988**

Iowa State Plane South Zone (1402)

Iowa Regional Coordinate System Zone 6 Council Bluffs

US Survey Feet

2015

Point Name: **24**

Designation: 2010-024 Fremont Co GPS Control Pt (Set by DCI in 2010)

NAD 83(NA2011) Latitude: **N40°46'24.25376"** Longitude: **W95°26'29.81706"**

NAVD 88 Ortho Height: **1046.021sft** Ellip. Ht: **946.618sft** **Geoid12A**

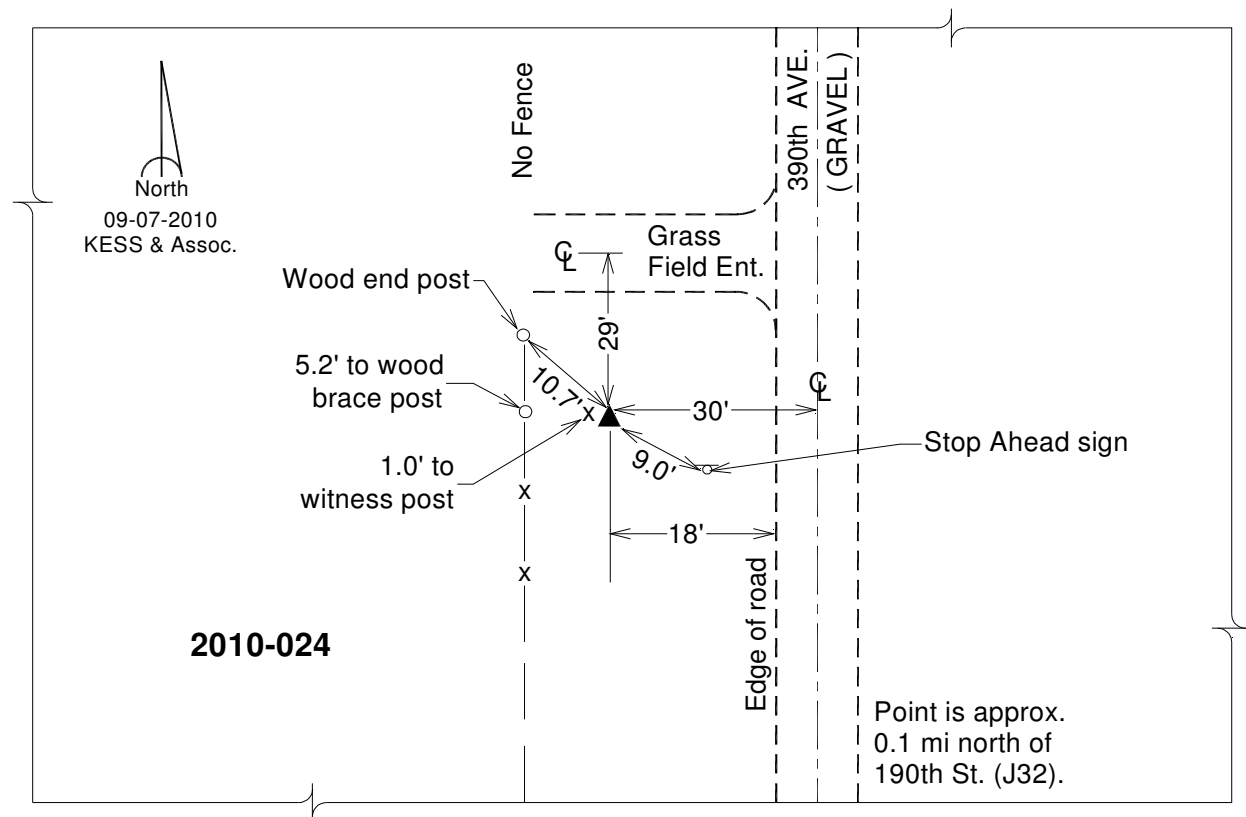
Iowa South Zone (1402) Northing: **287776.686sft** Easting: **1102691.872sft**

Mapping Angle: **-1°16'44"** Combination Scale Factor: **0.999930865**

IaRCS Zone 6 Northing: **6790827.439sft** Easting: **16580802.148sft**

Mapping Angle: **0°11'26"** Combination Scale Factor: **1.000001290**

Monument Type: Berntsen 3/4" Top Security Rod Monument with a 2-1/2" dia. domed survey cap and permanent magnet encased in a white PVC pipe with a NGS style alum. access cover.



This document was prepared by DCI on January 9, 2015 for use by Fremont County, Iowa