

**Fremont County, Iowa**

Horizontal Datum: **NAD 83(2011)** - Vertical Datum: **NAVD 1988**  
Iowa State Plane South Zone (1402)  
Iowa Regional Coordinate System Zone 6 Council Bluffs  
US Survey Feet  
**2015**

Point Name: **25**

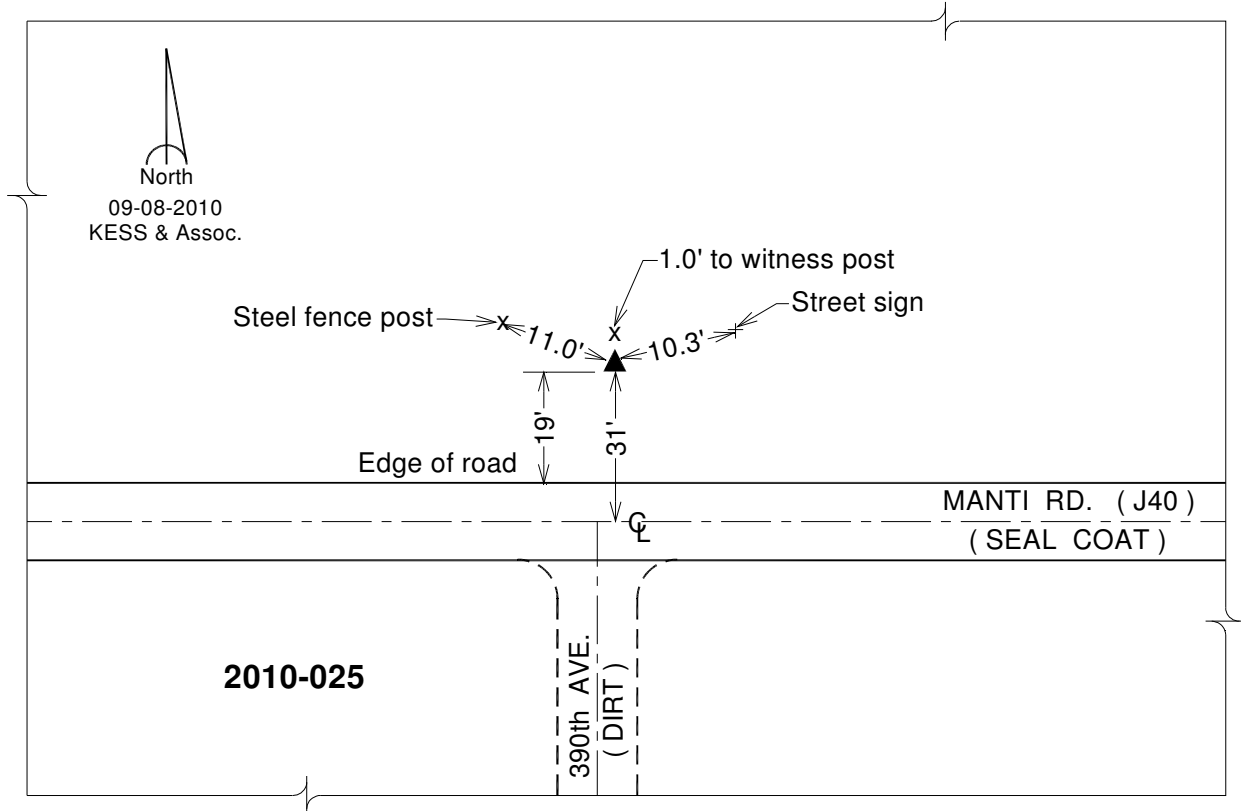
**Designation:** 2010-025 Fremont Co GPS Control Pt (Set by DCI in 2010)

NAD 83(NA2011) Latitude: **N40°43'42.65798"** Longitude: **W95°26'36.75968"**  
NAVD 88 Ortho Height: **956.632sft** Ellip. Ht: **856.883sft** **Geoid12A**

Iowa South Zone (1402) Northing: **271438.937sft** Easting: **1101792.489sft**  
Mapping Angle: **-1°16'49"** Combination Scale Factor: **0.999941254**

laRCS Zone 6 Northing: **6774470.897sft** Easting: **16580321.971sft**  
Mapping Angle: **0°11'21"** Combination Scale Factor: **1.000005483**

**Monument Type:** Berntsen 3/4" Top Security Rod Monument with a 2-1/2" dia. domed survey cap and permanent magnet encased in a white PVC pipe with a NGS style alum. access cover.



*This document was prepared by DCI on January 9, 2015 for use by Fremont County, Iowa*