

Fremont County, Iowa
Horizontal Datum: **NAD 83(2011)** - Vertical Datum: **NAVD 1988**
Iowa State Plane South Zone (1402)
Iowa Regional Coordinate System Zone 6 Council Bluffs
US Survey Feet
2015

Point Name: **26**

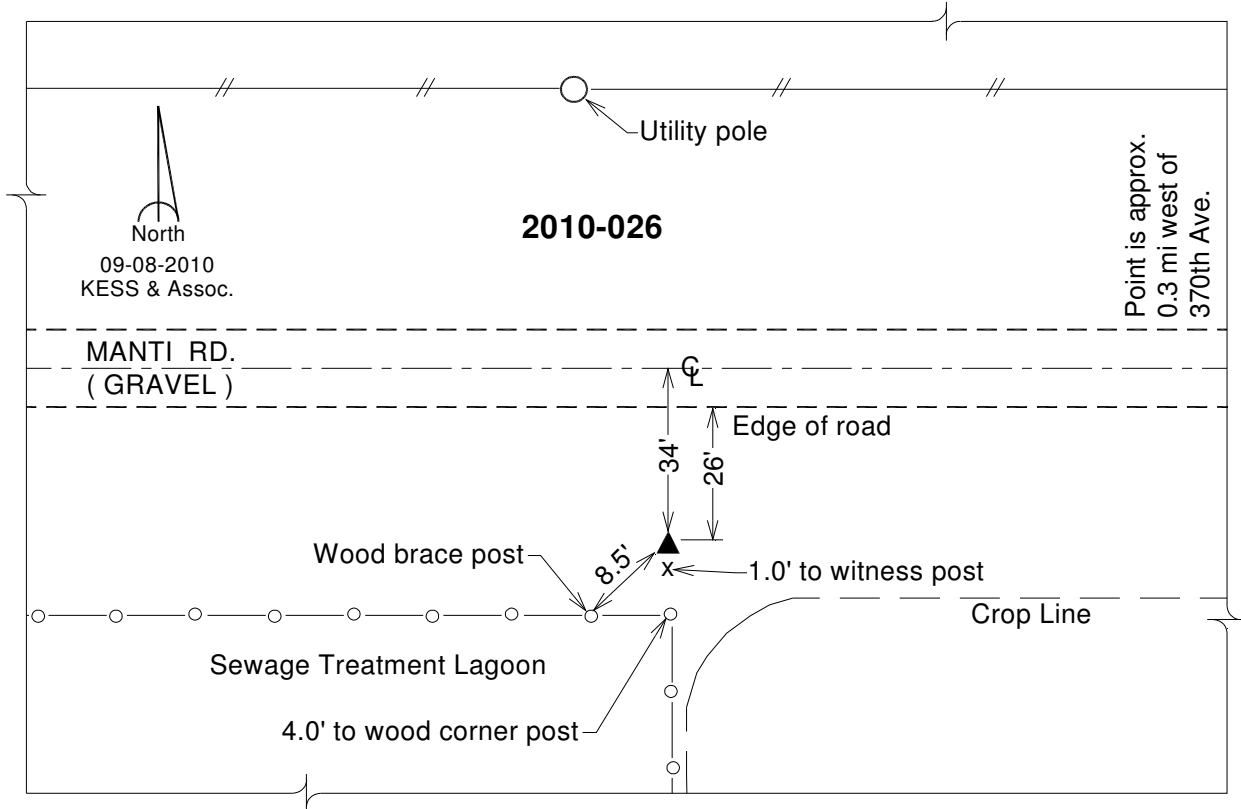
Designation: 2010-026 Fremont Co GPS Control Pt (Set by DCI in 2010)

NAD 83(NA2011) Latitude: **N40°43'42.79624"** Longitude: **W95°29'28.16714"**
NAVD 88 Ortho Height: **937.363sft** Ellip. Ht: **837.996sft** **Geoid12A**

Iowa South Zone (1402) Northing: **271751.370sft** Easting: **1088599.807sft**
Mapping Angle: **-1°18'42"** Combination Scale Factor: **0.999942149**

IaRCS Zone 6 Northing: **6774444.915sft** Easting: **16567124.783sft**
Mapping Angle: **0°09'29"** Combination Scale Factor: **1.000004160**

Monument Type: Berntsen 3/4" Top Security Rod Monument with a 2-1/2" dia. domed survey cap and permanent magnet encased in a white PVC pipe with a NGS style alum. access cover.



This document was prepared by DCI on January 9, 2015 for use by Fremont County, Iowa