

**Fremont County, Iowa**

Horizontal Datum: **NAD 83(2011)** - Vertical Datum: **NAVD 1988**  
Iowa State Plane South Zone (1402)  
Iowa Regional Coordinate System Zone 6 Council Bluffs  
US Survey Feet  
**2015**

Point Name: **27**

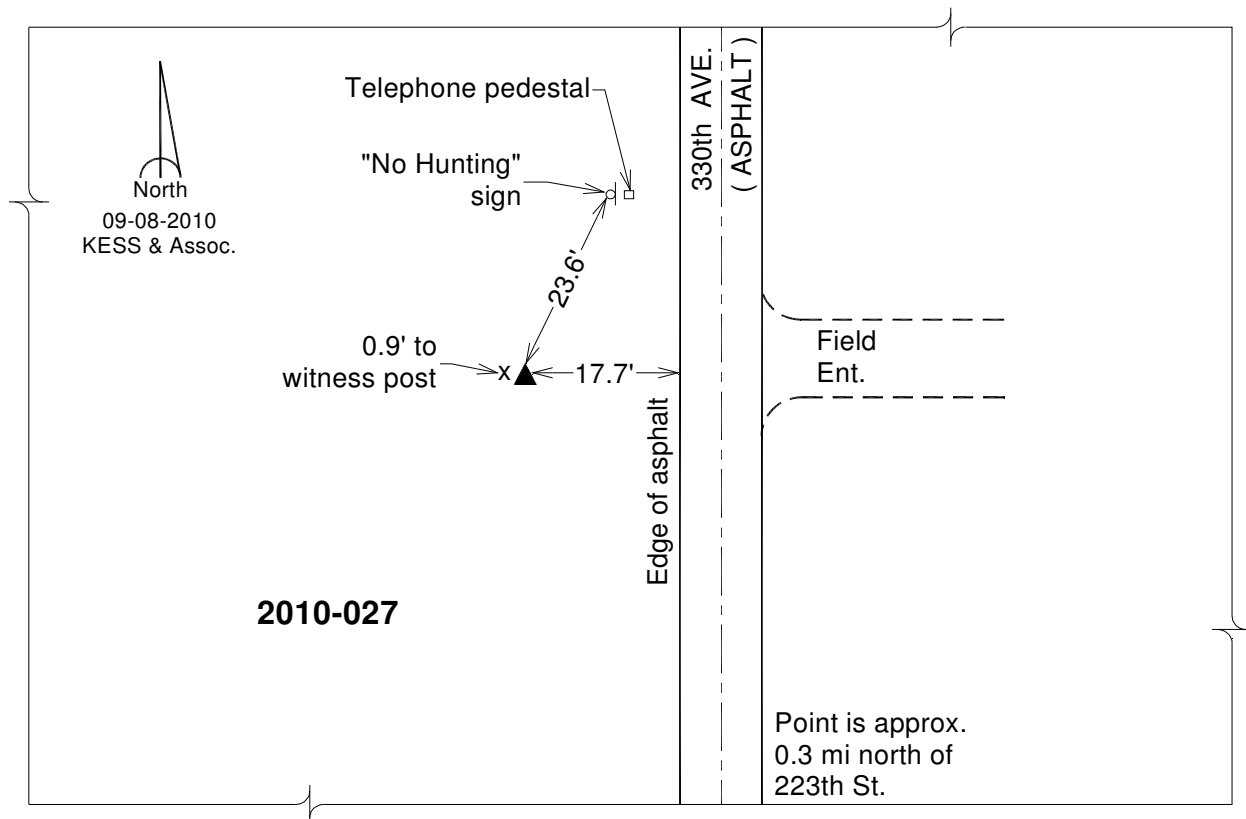
**Designation:** 2010-027 Fremont Co GPS Control Pt (Set by DCI in 2010)

NAD 83(NA2011) Latitude: **N40°43'40.03314"** Longitude: **W95°33'22.66644"**  
NAVD 88 Ortho Height: **979.656sft** Ellip. Ht: **880.868sft** **Geoid12A**

Iowa South Zone (1402) Northing: **271891.814sft** Easting: **1070544.379sft**  
Mapping Angle: **-1°21'16"** Combination Scale Factor: **0.999940213**

laRCS Zone 6 Northing: **6774122.173sft** Easting: **16549070.597sft**  
Mapping Angle: **0°06'56"** Combination Scale Factor: **0.999999717**

**Monument Type:** Berntsen 3/4" Top Security Rod Monument with a 2-1/2" dia. domed survey cap and permanent magnet encased in a white PVC pipe with a NGS style alum. access cover.



*This document was prepared by DCI on January 9, 2015 for use by Fremont County, Iowa*