

Fremont County, Iowa
Horizontal Datum: **NAD 83(2011)** - Vertical Datum: **NAVD 1988**
Iowa State Plane South Zone (1402)
Iowa Regional Coordinate System Zone 6 Council Bluffs
US Survey Feet
2015

Point Name: **28**

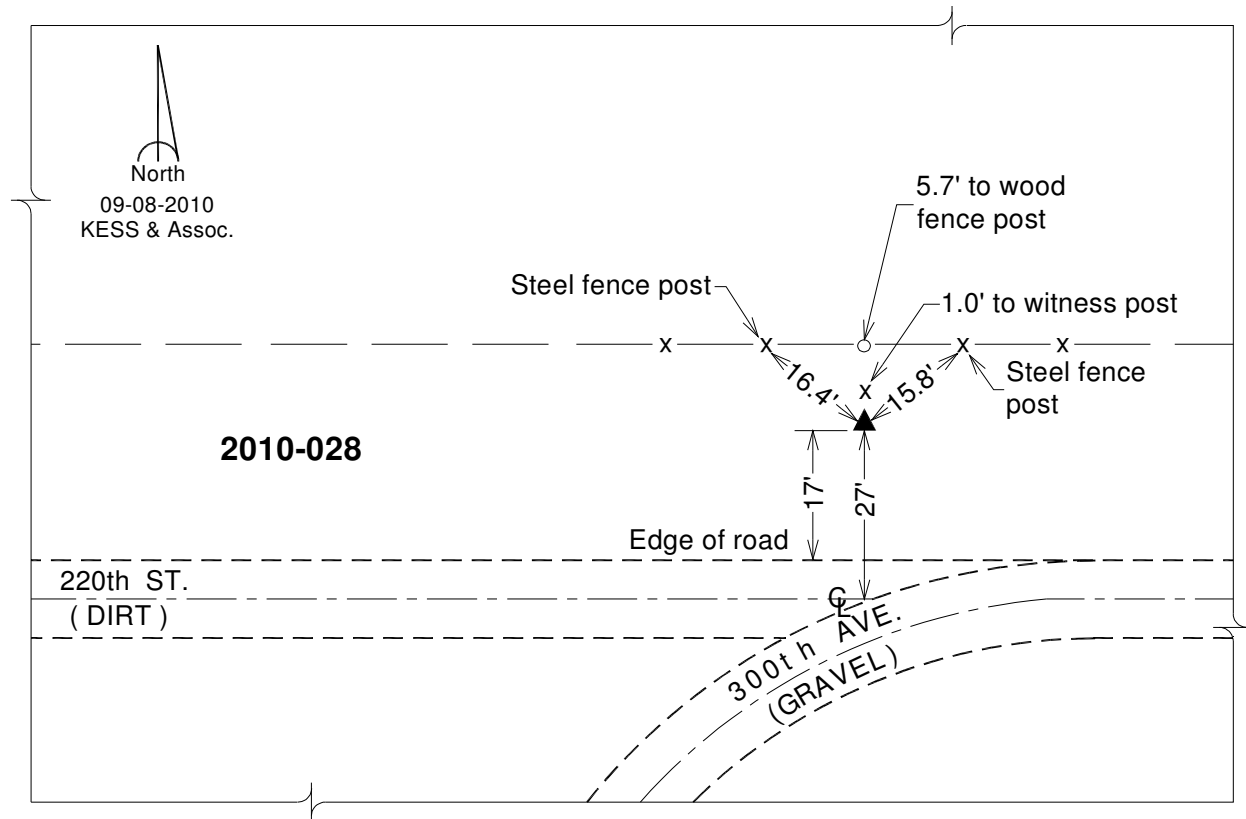
Designation: 2010-028 Fremont Co GPS Control Pt (Set by DCI in 2010)

NAD 83(NA2011) Latitude: **N40°43'43.68124"** Longitude: **W95°36'57.79128"**
NAVD 88 Ortho Height: **1022.958sft** Ellip. Ht: **924.780sft** **Geoid12A**

Iowa South Zone (1402) Northing: **272658.085sft** Easting: **1053995.834sft**
Mapping Angle: **-1°23'38"** Combination Scale Factor: **0.999937973**

laRCS Zone 6 Northing: **6774463.630sft** Easting: **16532506.867sft**
Mapping Angle: **0°04'35"** Combination Scale Factor: **0.999996077**

Monument Type: Berntsen 3/4" Top Security Rod Monument with a 2-1/2" dia. domed survey cap and permanent magnet encased in a white PVC pipe with a NGS style alum. access cover.



This document was prepared by DCI on January 9, 2015 for use by Fremont County, Iowa