

Fremont County, Iowa
 Horizontal Datum: **NAD 83(2011)** - Vertical Datum: **NAVD 1988**
 Iowa State Plane South Zone (1402)
 Iowa Regional Coordinate System Zone 6 Council Bluffs
 US Survey Feet
2015

Point Name: **30**

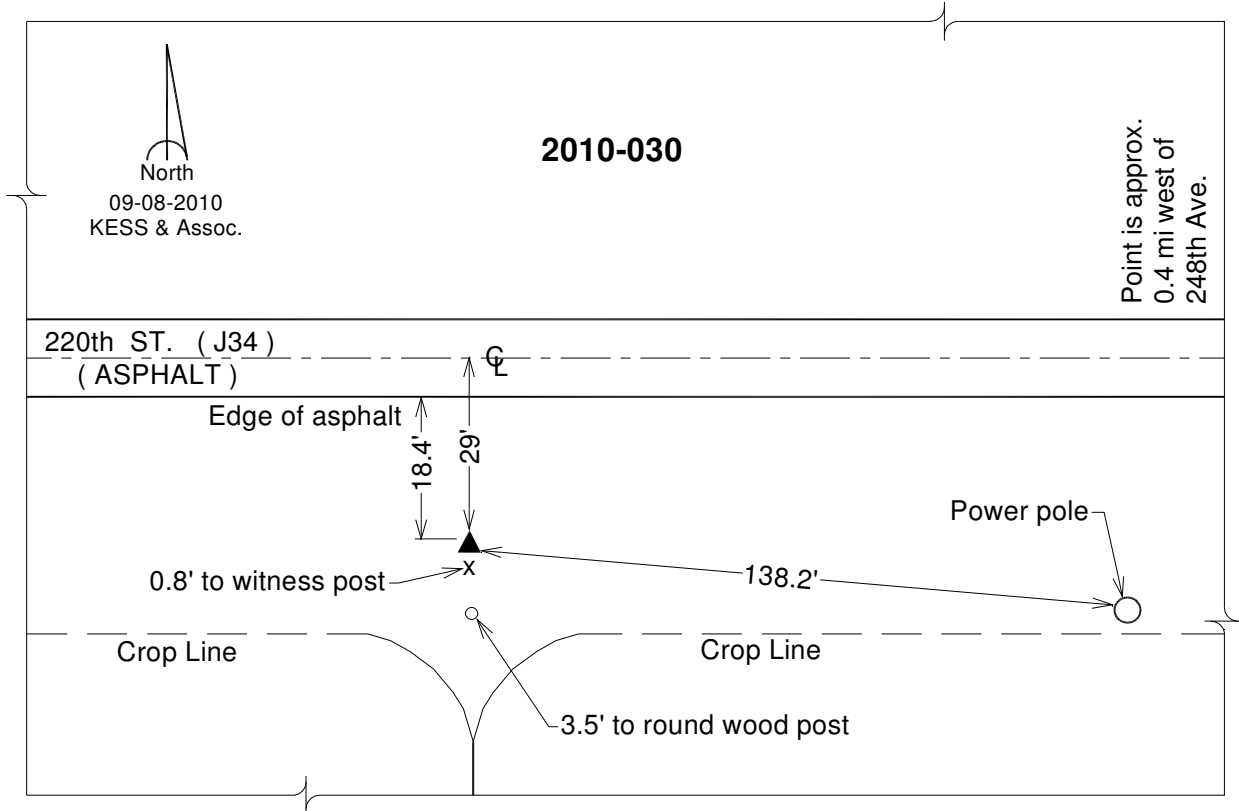
Designation: 2010-030 Fremont Co GPS Control Pt (Set by DCI in 2010)

NAD 83(NA2011) Latitude: **N40°43'43.82332"** Longitude: **W95°43'15.20474"**
 NAVD 88 Ortho Height: **924.859sft** Ellip. Ht: **827.825sft** **Geoid12A**

Iowa South Zone (1402) Northing: **273396.753sft** Easting: **1024948.916sft**
 Mapping Angle: **-1°27'46"** Combination Scale Factor: **0.999942594**

IaRCS Zone 6 Northing: **6774456.547sft** Easting: **16503448.892sft**
 Mapping Angle: **0°00'29"** Combination Scale Factor: **0.999999510**

Monument Type: Berntsen 3/4" Top Security Rod Monument with a 2-1/2" dia. domed survey cap and permanent magnet encased in a white PVC pipe with a NGS style alum. access cover.



This document was prepared by DCI on January 9, 2015 for use by Fremont County, Iowa