

**Fremont County, Iowa**

Horizontal Datum: **NAD 83(2011)** - Vertical Datum: **NAVD 1988**  
Iowa State Plane South Zone (1402)  
Iowa Regional Coordinate System Zone 6 Council Bluffs  
US Survey Feet  
**2015**

Point Name: **31**

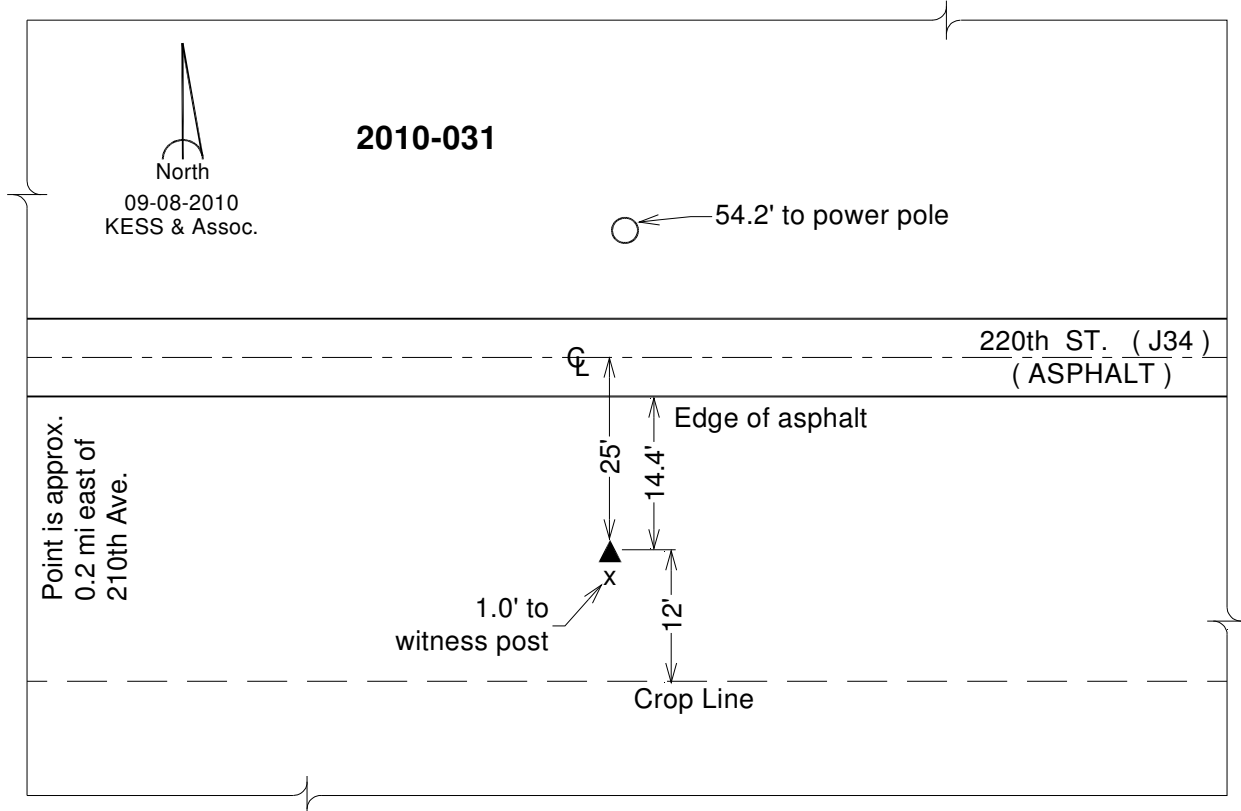
**Designation:** 2010-031 Fremont Co GPS Control Pt (Set by DCI in 2010)

NAD 83(NA2011) Latitude: **N40°43'44.84220"** Longitude: **W95°46'57.16944"**  
NAVD 88 Ortho Height: **927.429sft** Ellip. Ht: **831.160sft** **Geoid12A**

Iowa South Zone (1402) Northing: **273942.152sft** Easting: **1007868.735sft**  
Mapping Angle: **-1°30'13"** Combination Scale Factor: **0.999942394**

IaRCS Zone 6 Northing: **6774563.243sft** Easting: **16486359.365sft**  
Mapping Angle: **-0°01'56"** Combination Scale Factor: **0.999999550**

**Monument Type:** Berntsen 3/4" Top Security Rod Monument with a 2-1/2" dia. domed survey cap and permanent magnet encased in a white PVC pipe with a NGS style alum. access cover.



*This document was prepared by DCI on January 9, 2015 for use by Fremont County, Iowa*