

Fremont County, Iowa
Horizontal Datum: **NAD 83(2011)** - Vertical Datum: **NAVD 1988**
Iowa State Plane South Zone (1402)
Iowa Regional Coordinate System Zone 6 Council Bluffs
US Survey Feet
2015

Point Name: **32**

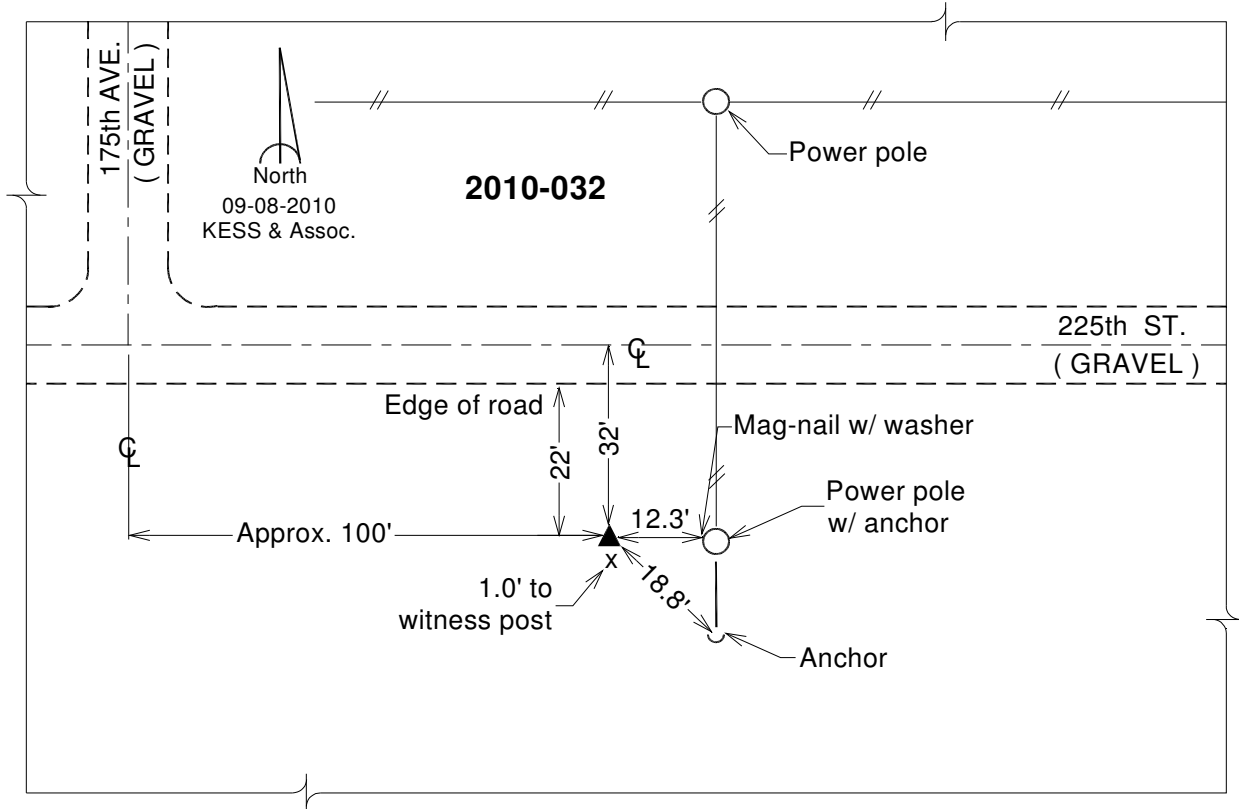
Designation: 2010-032 Fremont Co GPS Control Pt (Set by DCI in 2010)

NAD 83(NA2011) Latitude: **N40°43'27.99496"** Longitude: **W95°51'08.43383"**
NAVD 88 Ortho Height: **926.704sft** Ellip. Ht: **831.357sft** **Geoid12A**

Iowa South Zone (1402) Northing: **272753.127sft** Easting: **988485.244sft**
Mapping Angle: **-1°32'58"** Combination Scale Factor: **0.999943056**

IaRCS Zone 6 Northing: **6772876.709sft** Easting: **16467011.695sft**
Mapping Angle: **-0°04'40"** Combination Scale Factor: **1.000000571**

Monument Type: Berntsen 3/4" Top Security Rod Monument with a 2-1/2" dia. domed survey cap and permanent magnet encased in a white PVC pipe with a NGS style alum. access cover.



This document was prepared by DCI on January 9, 2015 for use by Fremont County, Iowa