

**Fremont County, Iowa**

Horizontal Datum: **NAD 83(2011)** - Vertical Datum: **NAVD 1988**  
Iowa State Plane South Zone (1402)  
Iowa Regional Coordinate System Zone 6 Council Bluffs  
US Survey Feet  
**2015**

Point Name: **33**

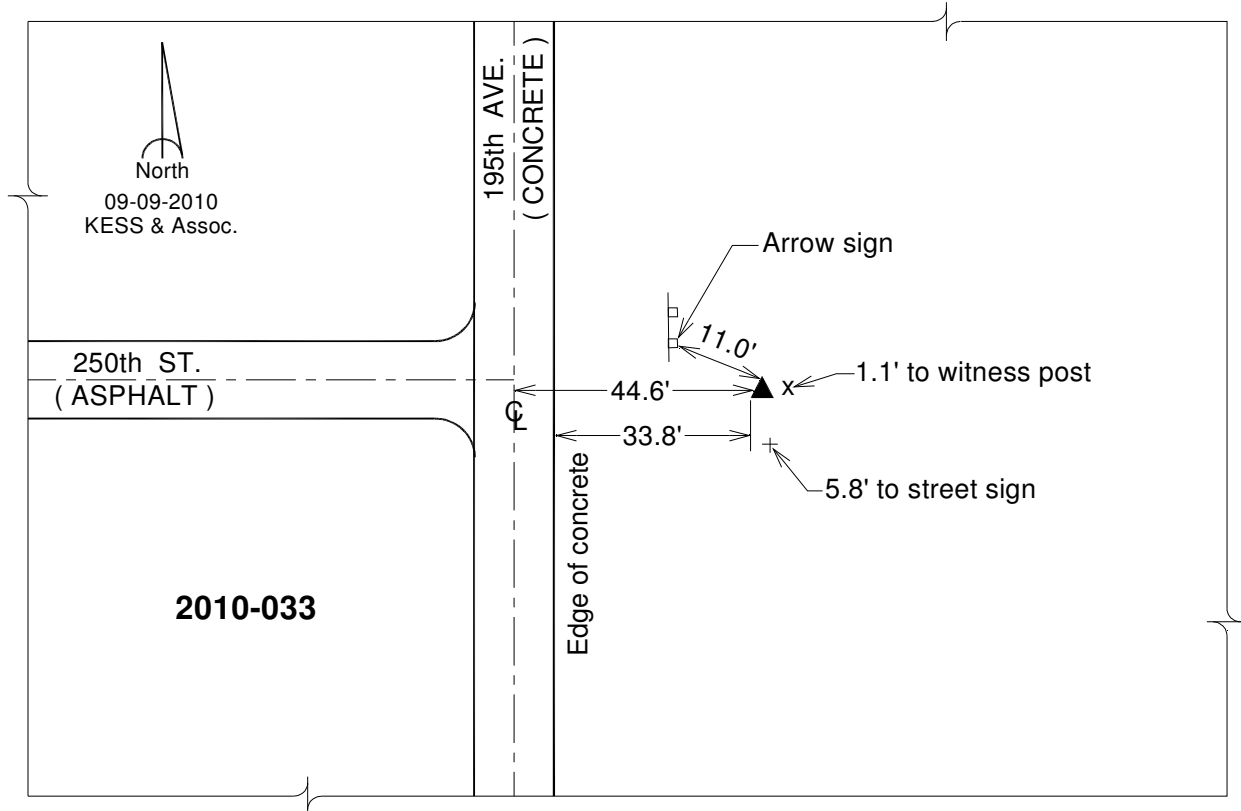
**Designation:** 2010-033 Fremont Co GPS Control Pt (Set by DCI in 2010)

NAD 83(NA2011) Latitude: **N40°41'22.18684"** Longitude: **W95°48'37.75615"**  
NAVD 88 Ortho Height: **923.020sft** Ellip. Ht: **826.698sft** **Geoid12A**

Iowa South Zone (1402) Northing: **259714.737sft** Easting: **999744.063sft**  
Mapping Angle: **-1°31'19"** Combination Scale Factor: **0.999948496**

laRCS Zone 6 Northing: **6760131.094sft** Easting: **16478602.309sft**  
Mapping Angle: **-0°03'01"** Combination Scale Factor: **1.000000073**

**Monument Type:** Berntsen 3/4" Top Security Rod Monument with a 2-1/2" dia. domed survey cap and permanent magnet encased in a white PVC pipe with a NGS style alum. access cover.



*This document was prepared by DCI on January 9, 2015 for use by Fremont County, Iowa*