

Fremont County, Iowa

Horizontal Datum: **NAD 83(2011)** - Vertical Datum: **NAVD 1988**
Iowa State Plane South Zone (1402)
Iowa Regional Coordinate System Zone 6 Council Bluffs
US Survey Feet
2015

Point Name: **34**

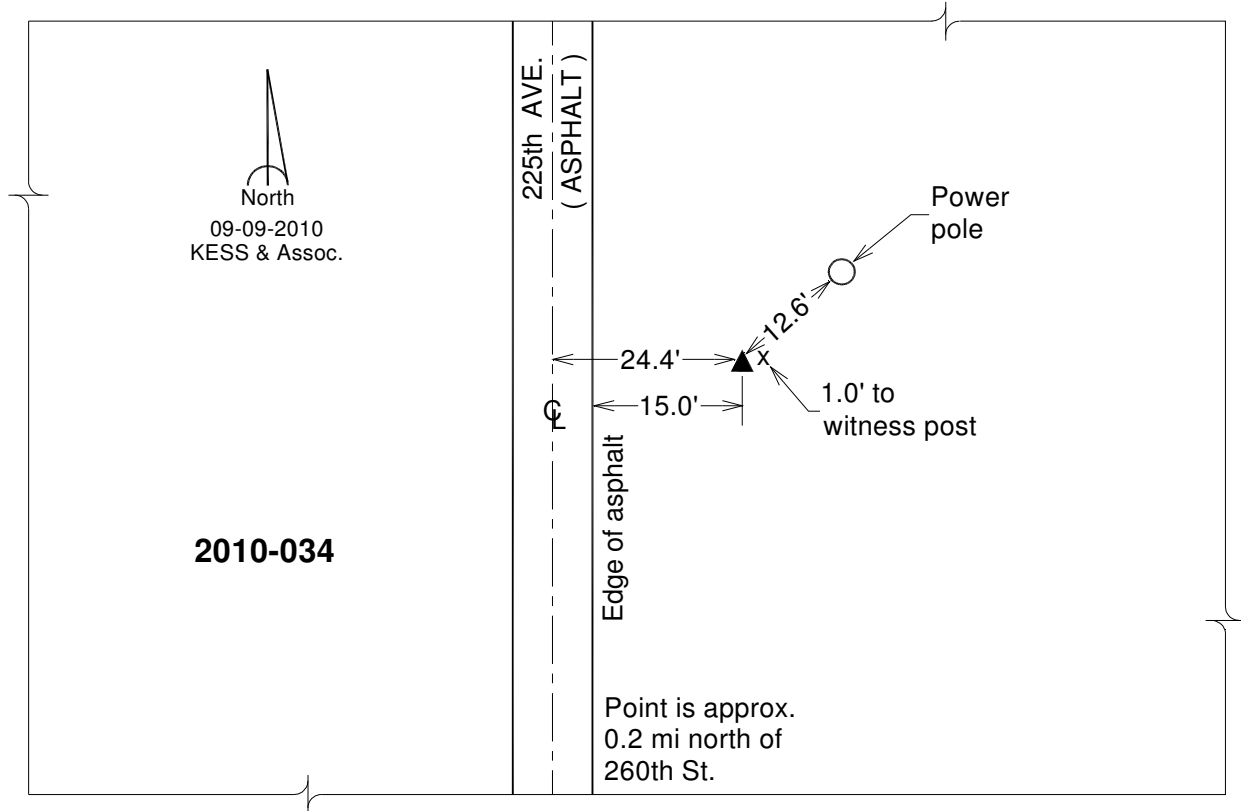
Designation: 2010-034 Fremont Co GPS Control Pt (Set by DCI in 2010)

NAD 83(NA2011) Latitude: **N40°40'39.10199"** Longitude: **W95°45'48.62368"**
NAVD 88 Ortho Height: **920.302sft** Ellip. Ht: **823.291sft** **Geoid12A**

Iowa South Zone (1402) Northing: **255013.441sft** Easting: **1012655.017sft**
Mapping Angle: **-1°29'28"** Combination Scale Factor: **0.999950530**

IaRCS Zone 6 Northing: **6755762.670sft** Easting: **16491630.387sft**
Mapping Angle: **-0°01'11"** Combination Scale Factor: **0.999999792**

Monument Type: Berntsen 3/4" Top Security Rod Monument with a 2-1/2" dia. domed survey cap and permanent magnet encased in a white PVC pipe with a NGS style alum. access cover.



This document was prepared by DCI on January 9, 2015 for use by Fremont County, Iowa