

Fremont County, Iowa
Horizontal Datum: **NAD 83(2011)** - Vertical Datum: **NAVD 1988**
Iowa State Plane South Zone (1402)
Iowa Regional Coordinate System Zone 6 Council Bluffs
US Survey Feet
2015

Point Name: **36**

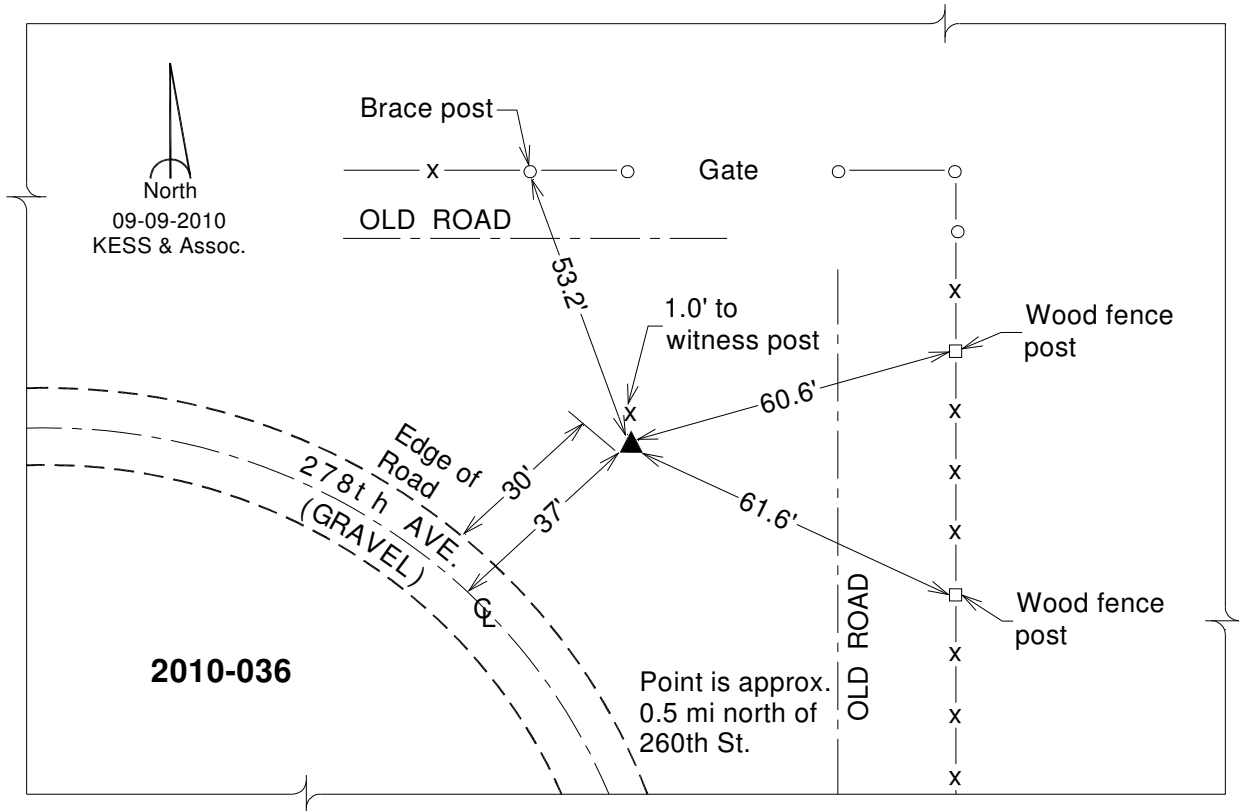
Designation: 2010-036 Fremont Co GPS Control Pt (Set by DCI in 2010)

NAD 83(NA2011) Latitude: **N40°40'48.85353"** Longitude: **W95°39'37.09416"**
NAVD 88 Ortho Height: **1148.458sft** Ellip. Ht: **1050.387sft** **Geoid12A**

Iowa South Zone (1402) Northing: **255272.162sft** Easting: **1041295.753sft**
Mapping Angle: **-1°25'23"** Combination Scale Factor: **0.999939266**

IaRCS Zone 6 Northing: **6756756.567sft** Easting: **16520256.461sft**
Mapping Angle: **0°02'51"** Combination Scale Factor: **0.999989345**

Monument Type: Berntsen 3/4" Top Security Rod Monument with a 2-1/2" dia. domed survey cap and permanent magnet encased in a white PVC pipe with a NGS style alum. access cover.



This document was prepared by DCI on January 9, 2015 for use by Fremont County, Iowa