

**Fremont County, Iowa**

Horizontal Datum: **NAD 83(2011)** - Vertical Datum: **NAVD 1988**  
Iowa State Plane South Zone (1402)  
Iowa Regional Coordinate System Zone 6 Council Bluffs  
US Survey Feet  
**2015**

Point Name: **37**

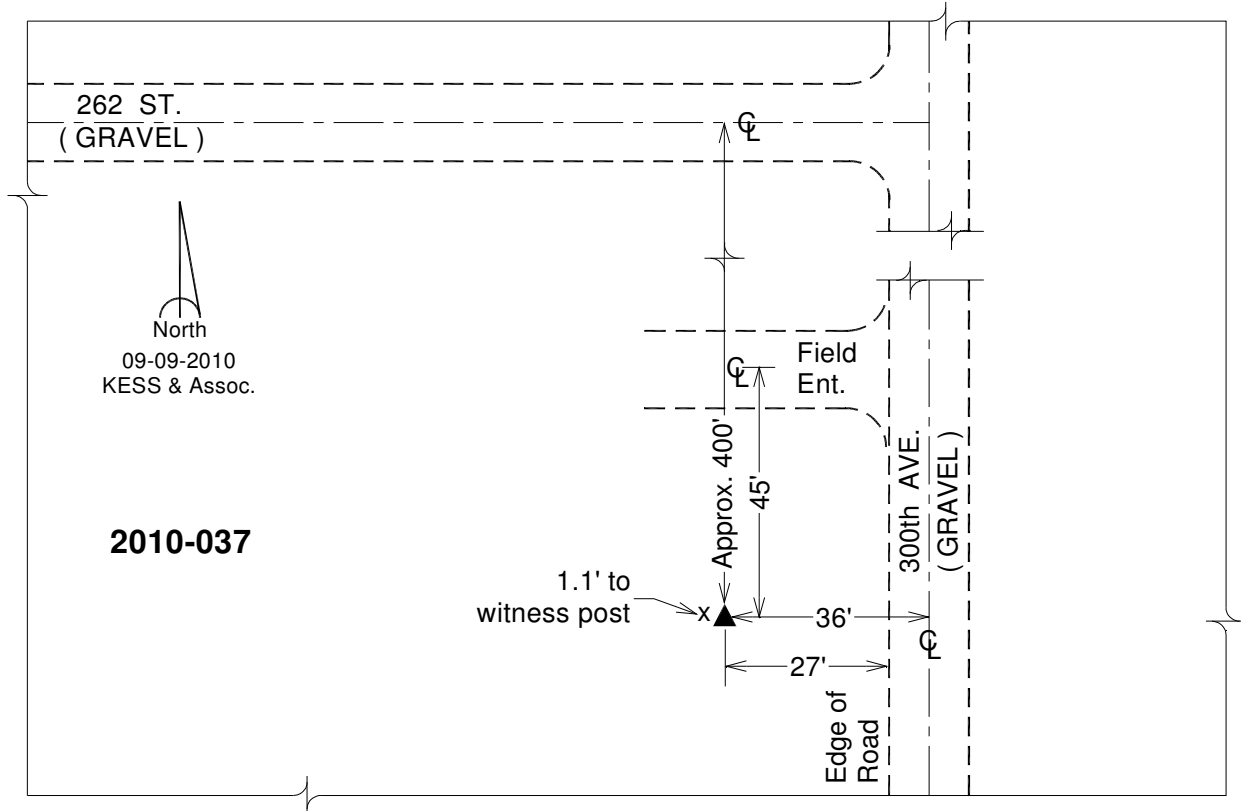
**Designation:** 2010-037 Fremont Co GPS Control Pt (Set by DCI in 2010)

NAD 83(NA2011) Latitude: **N40°40'17.66471"** Longitude: **W95°37'12.09376"**  
NAVD 88 Ortho Height: **1053.017sft** Ellip. Ht: **954.464sft** **Geoid12A**

Iowa South Zone (1402) Northing: **251841.906sft** Easting: **1052386.937sft**  
Mapping Angle: **-1°23'47"** Combination Scale Factor: **0.999945218**

IaRCS Zone 6 Northing: **6753611.900sft** Easting: **16531432.573sft**  
Mapping Angle: **0°04'26"** Combination Scale Factor: **0.999994582**

**Monument Type:** Berntsen 3/4" Top Security Rod Monument with a 2-1/2" dia. domed survey cap and permanent magnet encased in a white PVC pipe with a NGS style alum. access cover.



*This document was prepared by DCI on January 9, 2015 for use by Fremont County, Iowa*