

Fremont County, Iowa
Horizontal Datum: **NAD 83(2011)** - Vertical Datum: **NAVD 1988**
Iowa State Plane South Zone (1402)
Iowa Regional Coordinate System Zone 6 Council Bluffs
US Survey Feet
2015

Point Name: **38**

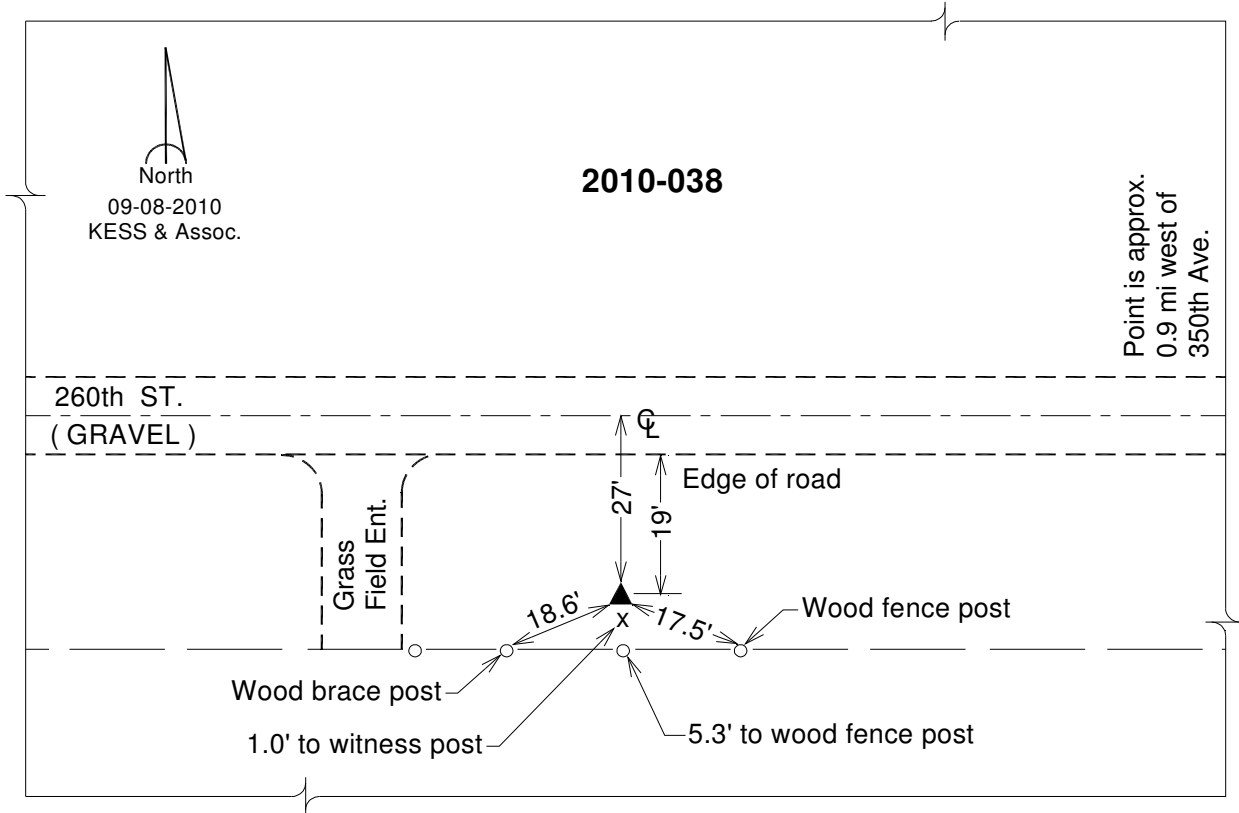
Designation: 2010-038 Fremont Co GPS Control Pt (Set by DCI in 2010)

NAD 83(NA2011) Latitude: **N40°40'19.06119"** Longitude: **W95°32'36.82606"**
NAVD 88 Ortho Height: **1043.425sft** Ellip. Ht: **944.210sft** **Geoid12A**

Iowa South Zone (1402) Northing: **251475.599sft** Easting: **1073594.825sft**
Mapping Angle: **-1°20'46"** Combination Scale Factor: **0.999945645**

IaRCS Zone 6 Northing: **6753789.795sft** Easting: **16552643.946sft**
Mapping Angle: **0°07'25"** Combination Scale Factor: **0.999997110**

Monument Type: Berntsen 3/4" Top Security Rod Monument with a 2-1/2" dia. domed survey cap and permanent magnet encased in a white PVC pipe with a NGS style alum. access cover.



This document was prepared by DCI on January 9, 2015 for use by Fremont County, Iowa