

Fremont County, Iowa
Horizontal Datum: **NAD 83(2011)** - Vertical Datum: **NAVD 1988**
Iowa State Plane South Zone (1402)
Iowa Regional Coordinate System Zone 6 Council Bluffs
US Survey Feet
2015

Point Name: **42**

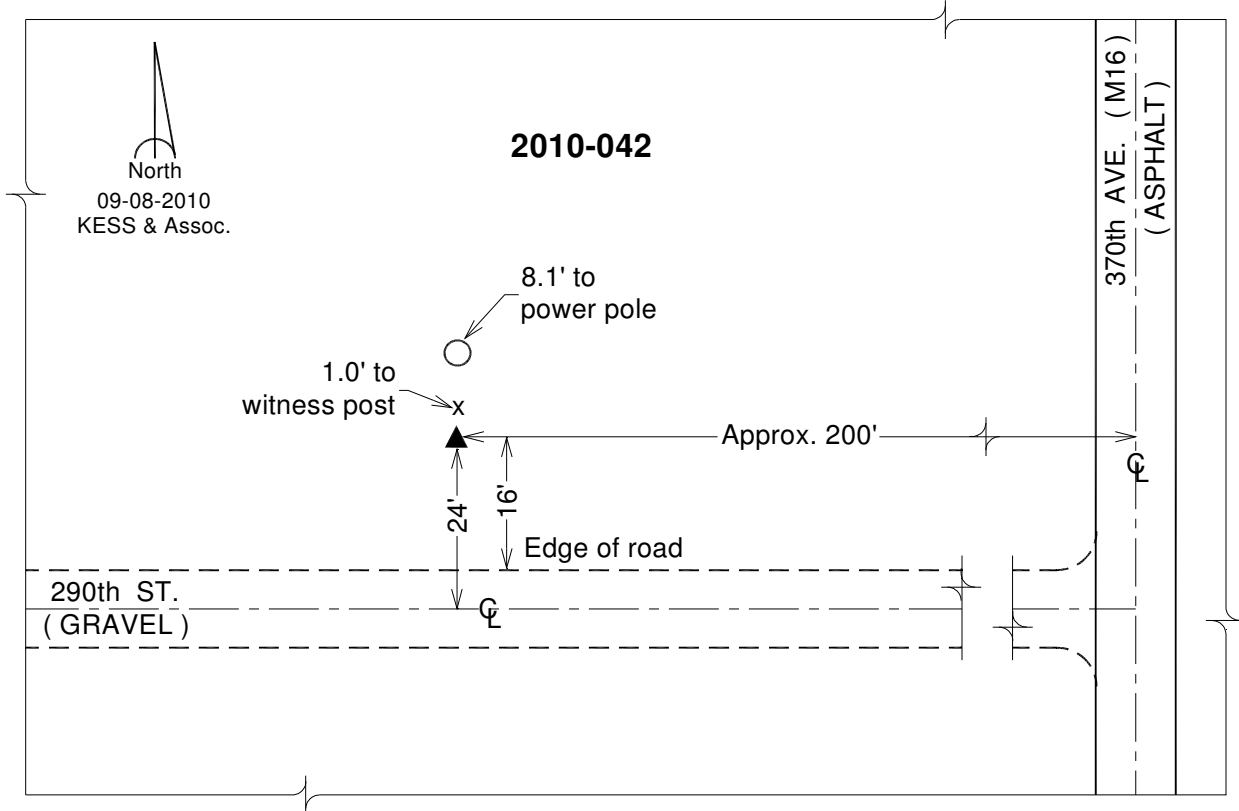
Designation: 2010-042 Fremont Co GPS Control Pt (Set by DCI in 2010)

NAD 83(NA2011) Latitude: **N40°37'40.93633"** Longitude: **W95°29'23.17900"**
NAVD 88 Ortho Height: **1037.480sft** Ellip. Ht: **937.765sft** **Geoid12A**

Iowa South Zone (1402) Northing: **235131.412sft** Easting: **1088146.093sft**
Mapping Angle: **-1°18'38"** Combination Scale Factor: **0.999953264**

IaRCS Zone 6 Northing: **6737823.373sft** Easting: **16567610.309sft**
Mapping Angle: **0°09'31"** Combination Scale Factor: **0.999999474**

Monument Type: Berntsen 3/4" Top Security Rod Monument with a 2-1/2" dia. domed survey cap and permanent magnet encased in a white PVC pipe with a NGS style alum. access cover.



This document was prepared by DCI on January 9, 2015 for use by Fremont County, Iowa