

**Fremont County, Iowa**

Horizontal Datum: **NAD 83(2011)** - Vertical Datum: **NAVD 1988**  
Iowa State Plane South Zone (1402)  
Iowa Regional Coordinate System Zone 6 Council Bluffs  
US Survey Feet  
**2015**

Point Name: **44**

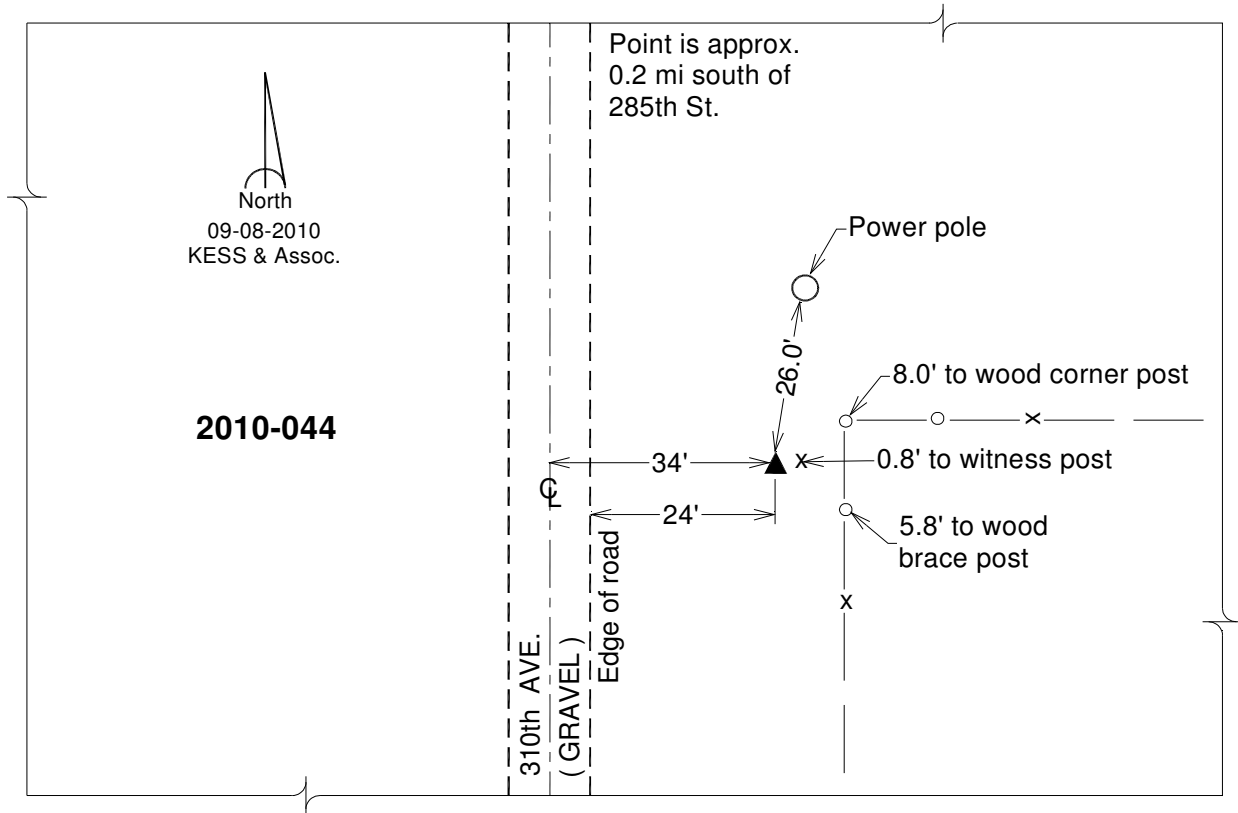
**Designation:** 2010-044 Fremont Co GPS Control Pt (Set by DCI in 2010)

NAD 83(NA2011) Latitude: **N40°37'57.56652"** Longitude: **W95°36'04.20097"**  
NAVD 88 Ortho Height: **1080.982sft** Ellip. Ht: **982.108sft** **Geoid12A**

Iowa South Zone (1402) Northing: **237540.981sft** Easting: **1057274.394sft**  
Mapping Angle: **-1°23'03"** Combination Scale Factor: **0.999950352**

IaRCS Zone 6 Northing: **6739440.424sft** Easting: **16536685.586sft**  
Mapping Angle: **0°05'10"** Combination Scale Factor: **0.999993672**

**Monument Type:** Berntsen 3/4" Top Security Rod Monument with a 2-1/2" dia. domed survey cap and permanent magnet encased in a white PVC pipe with a NGS style alum. access cover.



*This document was prepared by DCI on January 9, 2015 for use by Fremont County, Iowa*