

Fremont County, Iowa

Horizontal Datum: **NAD 83(2011)** - Vertical Datum: **NAVD 1988**
Iowa State Plane South Zone (1402)
Iowa Regional Coordinate System Zone 6 Council Bluffs
US Survey Feet
2015

Point Name: **45**

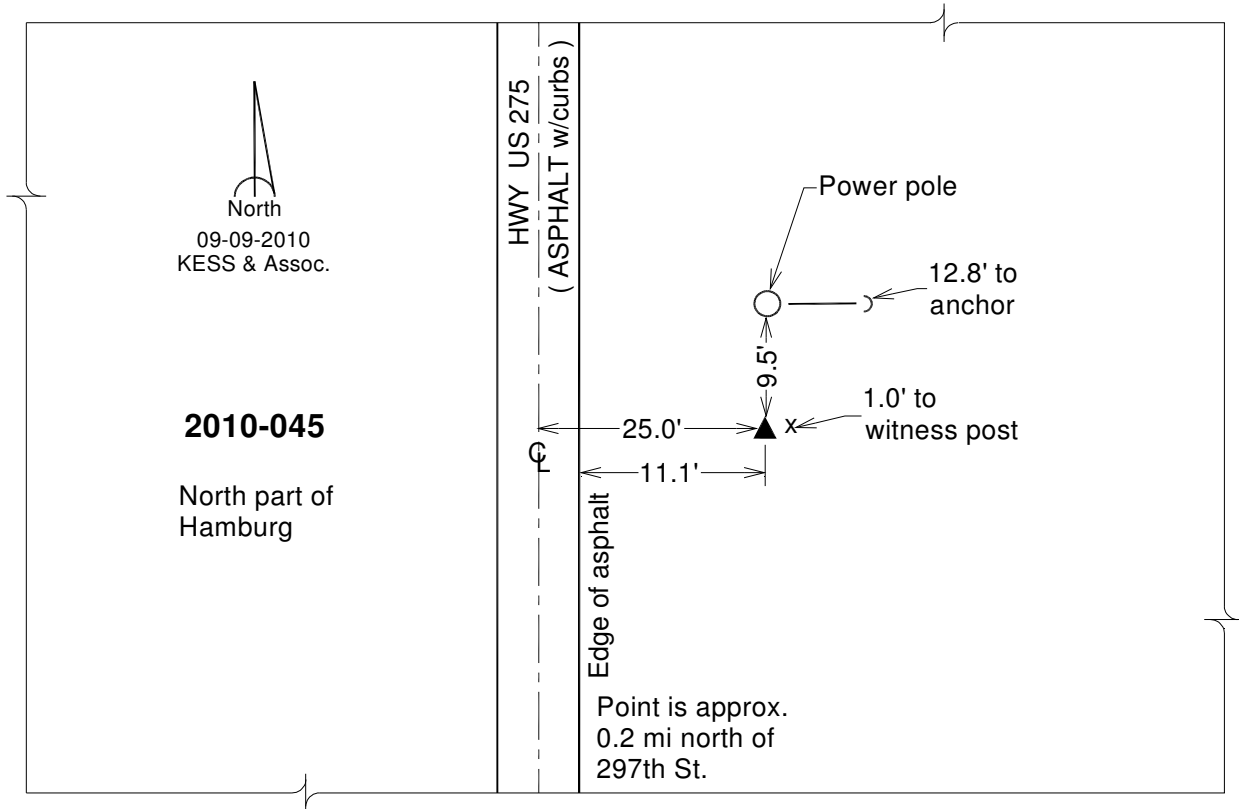
Designation: 2010-045 Fremont Co GPS Control Pt (Set by DCI in 2010)

NAD 83(NA2011) Latitude: **N40°37'19.33610"** Longitude: **W95°38'57.41306"**
NAVD 88 Ortho Height: **973.541sft** Ellip. Ht: **875.039sft** **Geoid12A**

Iowa South Zone (1402) Northing: **233999.445sft** Easting: **1043828.159sft**
Mapping Angle: **-1°24'57"** Combination Scale Factor: **0.999957301**

IaRCS Zone 6 Northing: **6735554.882sft** Easting: **16523334.088sft**
Mapping Angle: **0°03'17"** Combination Scale Factor: **0.999997865**

Monument Type: Berntsen 3/4" Top Security Rod Monument with a 2-1/2" dia. domed survey cap and permanent magnet encased in a white PVC pipe with a NGS style alum. access cover.



This document was prepared by DCI on January 9, 2015 for use by Fremont County, Iowa